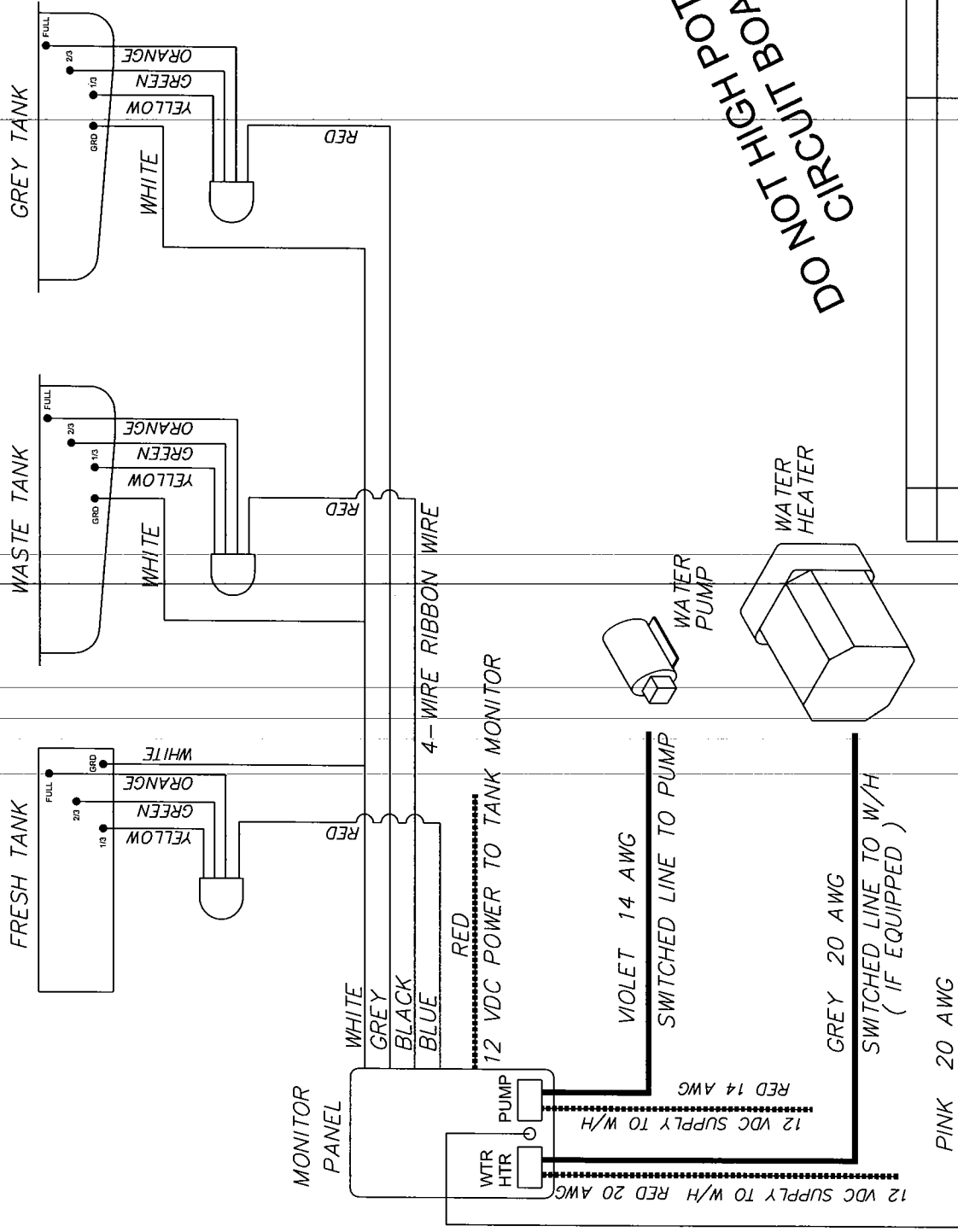


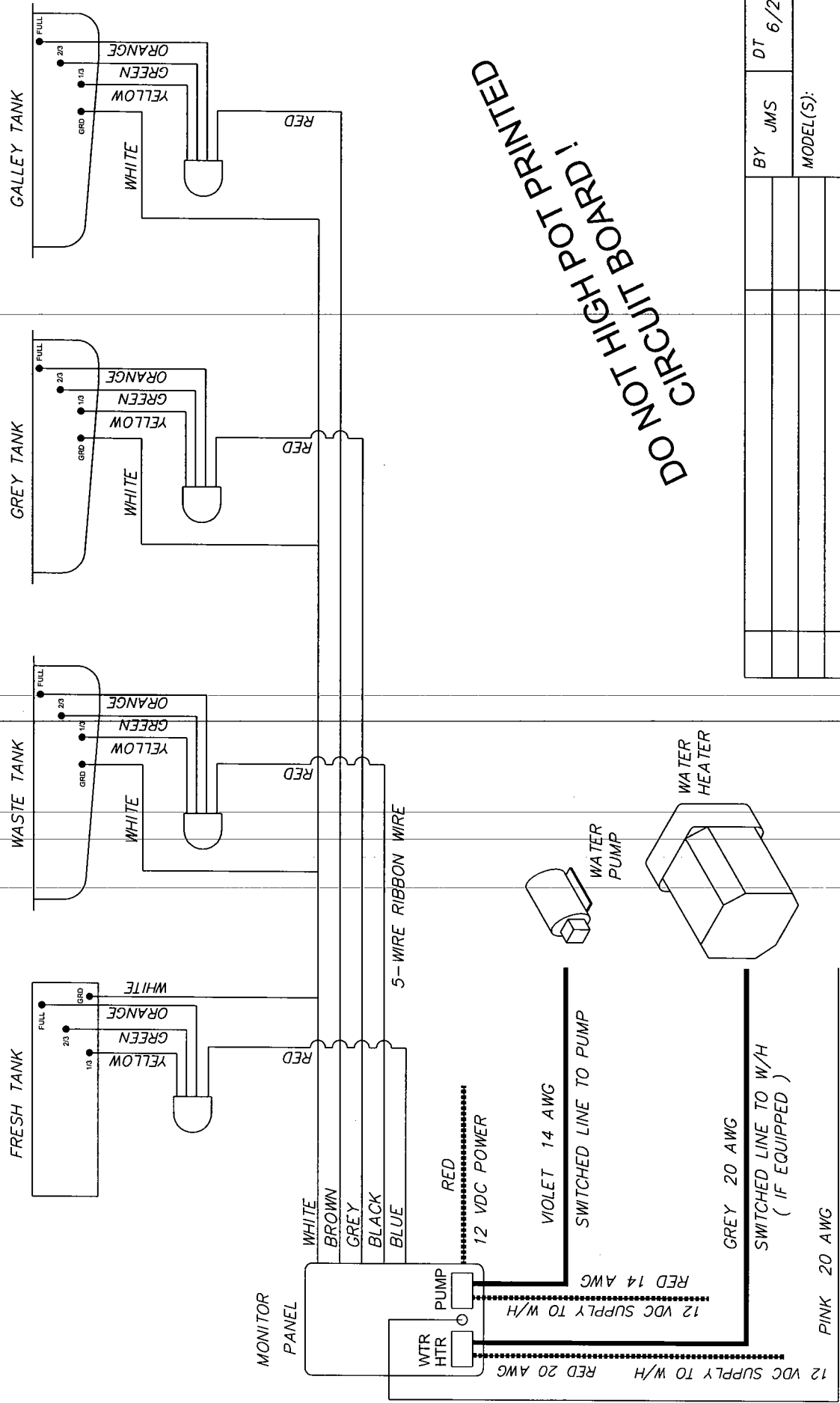
# MONITOR PANEL WIRING - THREE TANKS W/ WTR. HTR. & PUMP SWITCH



DO NOT HIGH POT PRINTED  
 CIRCUIT BOARD!

BY	JMS	DT	6/26/02
MODEL(S):			
TITLE			
MONITOR PANEL WIRING			
KEYSTONE RV COMPANY			
DWG #	02	ELECTRICAL	
SHEET	1	OF	1

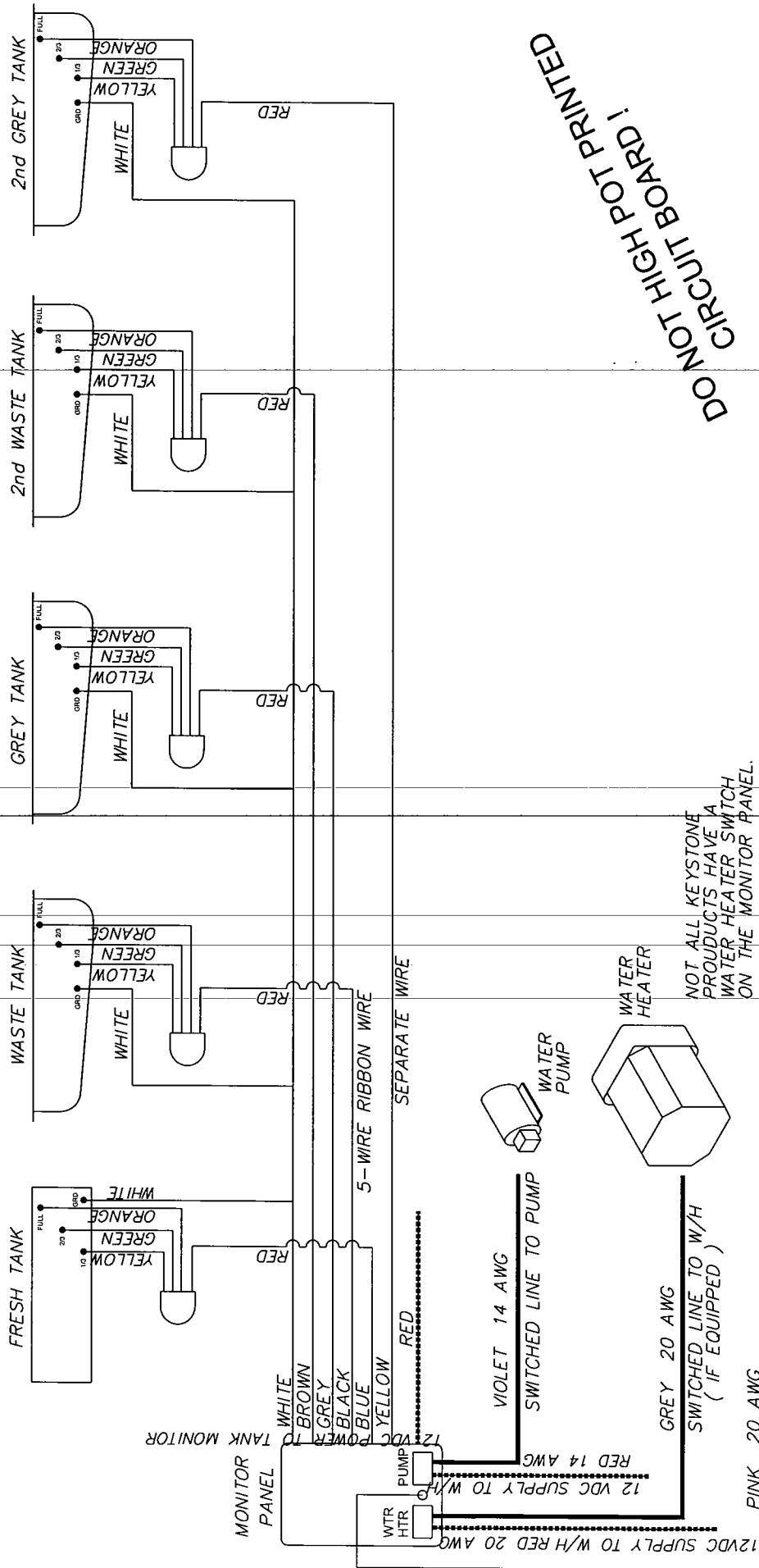
# MONITOR PANEL WIRING - FOUR TANKS W/ WTR. HTR. & PUMP SWITCH



DO NOT HIGH POT PRINTED  
CIRCUIT BOARD!

BY	JMS	DT	6/26/02
MODEL(S):			
TITLE		MONITOR PANEL WIRING	
DWG #		02 ELECTRICAL	
SHEET		1 OF 1	
KEYSTONE RV COMPANY			

MONITOR PANEL WIRING - FIVE TANKS W/ WTR. HTR. & PUMP SWITCH

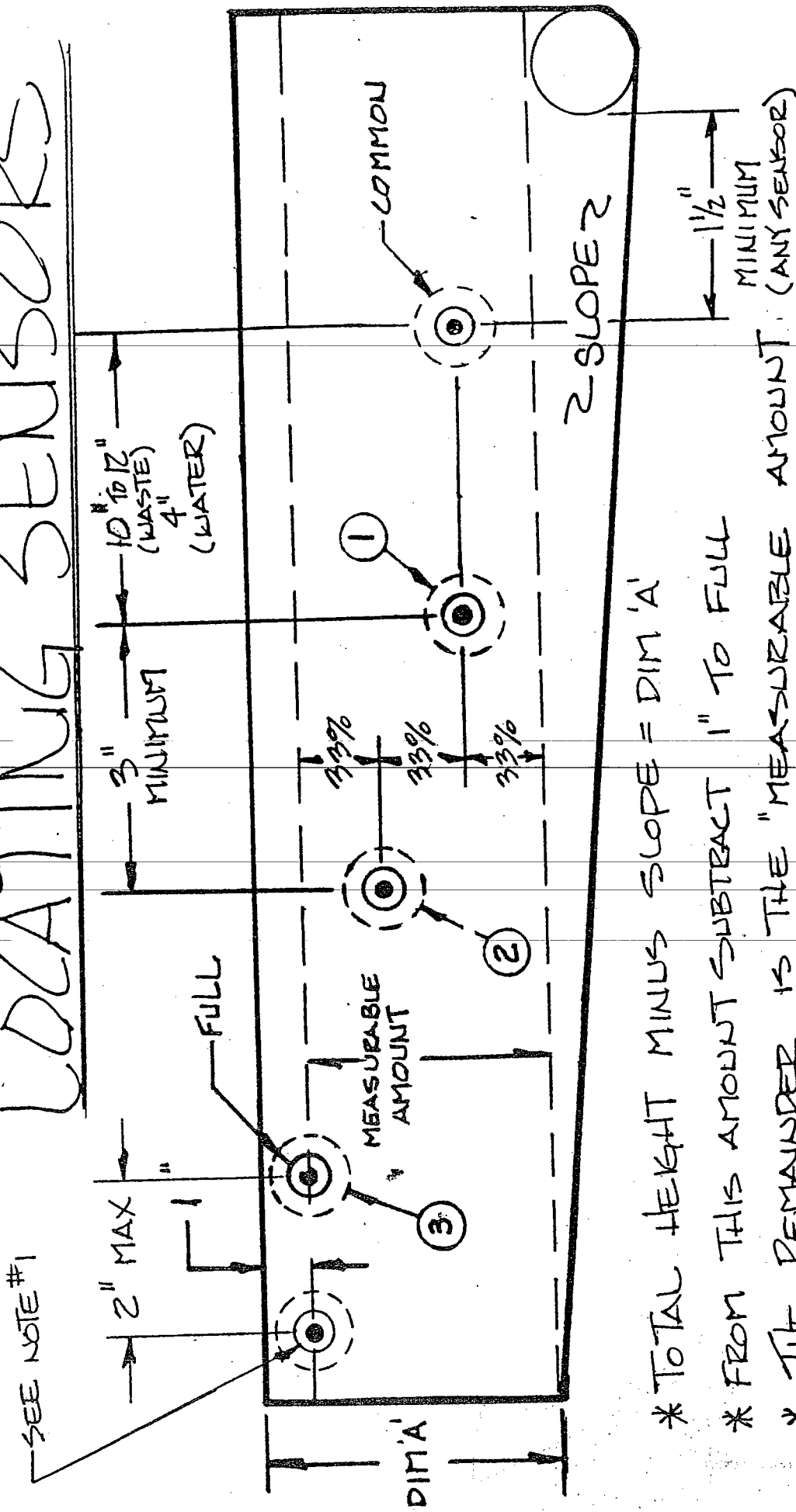


DO NOT HIGH POT PRINTED  
CIRCUIT BOARD!

NOT ALL KEYSTONE  
PRODUCTS HAVE A  
WATER HEATER SWITCH  
ON THE MONITOR PANEL.

BY	JMS	DT	6/26/02
MODEL(S):			
TITLE		MONITOR PANEL WIRING	
DWG #		02 ELECTRICAL	
SHEET		1 OF 1	
KEYSTONE RV COMPANY			

# LOCATING SENSORS

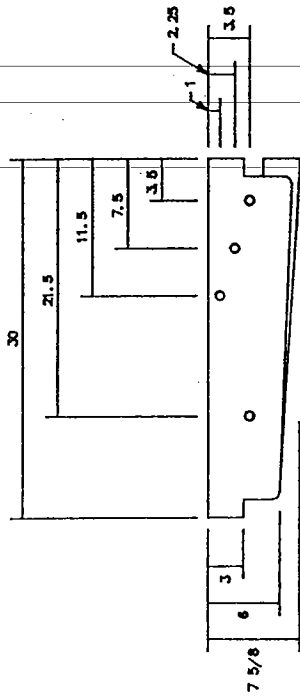


- \* TOTAL HEIGHT MINUS SLOPE = DIM 'A'
- \* FROM THIS AMOUNT SUBTRACT 1" TO FULL
- \* THE REMAINDER IS THE "MEASURABLE AMOUNT" (ANY SENSOR)
- \* DIVIDE THE MEASURABLE AMOUNT INTO THIRDS.
- \* LOCATE COMMON LEVEL WITH 1/3 (1) SENSOR.

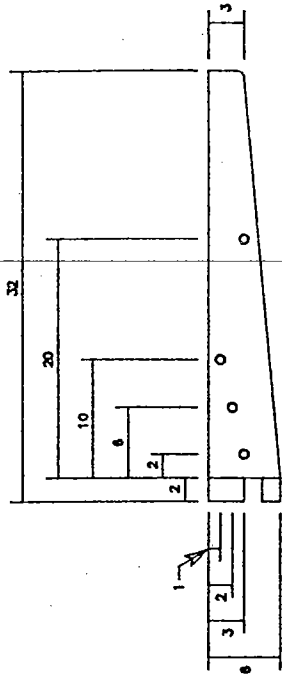
Note:

1. ADD'L COMMON SENSOR REQUIRED FOR USE WITH VENTLINE MONITOR PANELS FOR WATER TANKS ONLY.

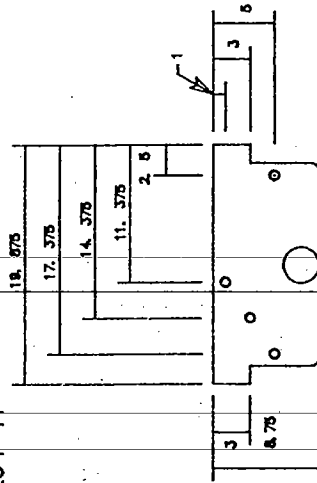
FOR USE WITH VENTLINE MONITOR



H-350 / 116-H - H-607 / 264-H

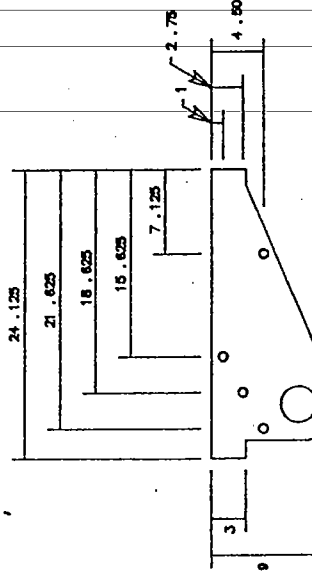


H-166 / 120-H

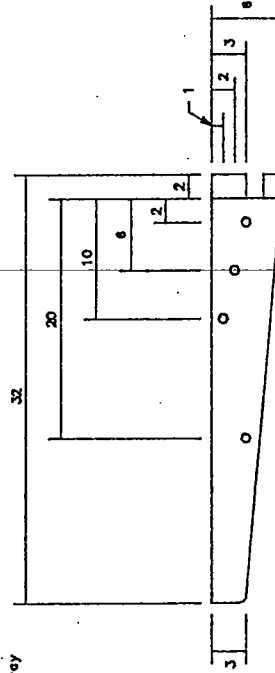


H-86 / 118-H

Reverse probe level position away from toilet inlet as needed.



H-304 / 113-H  
H-140 (OPPOSITE) / 119-H



H-167 / 114-H

K I B  
K o n t e r p r i s e s

HOLDING TANK PROBE LOCATION 6-1-94

• RECOMMEND THE USE OF TEMPLATES. - ALUMINUM OR PLYWOOD  
ALL DIMENSIONS GIVEN ARE IN INCHES DRAWN BY WFF III