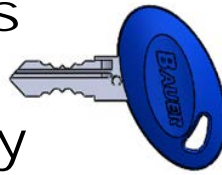
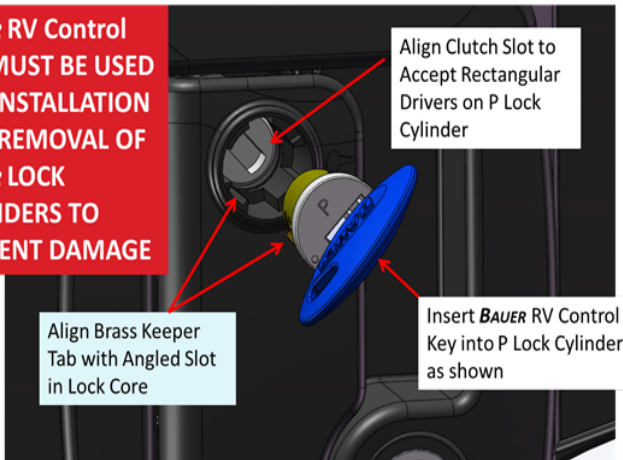


Installing Lock Cylinders as Easy as 1,2,3 with a Bauer Control Key



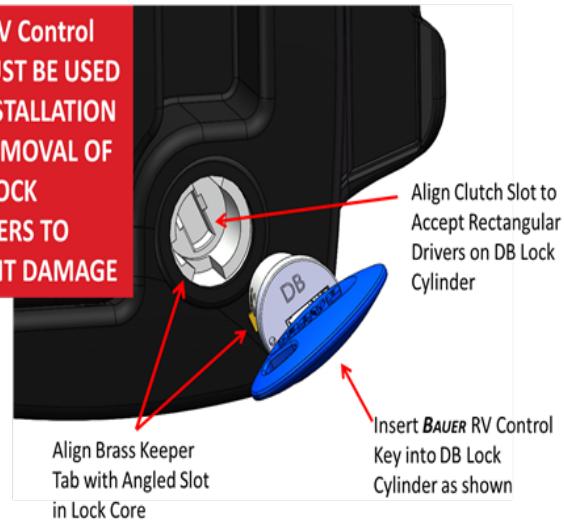
**The Blue Bauer
Control Key is the
Dead Bolt Master Key**

**BAUER RV Control
Key MUST BE USED
FOR INSTALLATION
AND REMOVAL OF
BAUER LOCK
CYLINDERS TO
PREVENT DAMAGE**

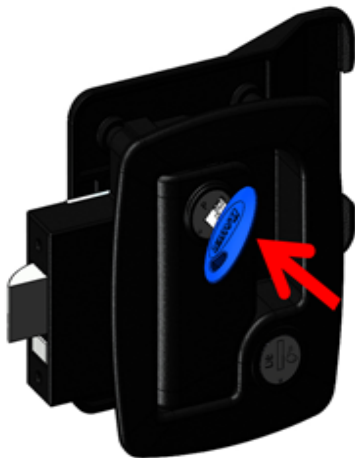


1

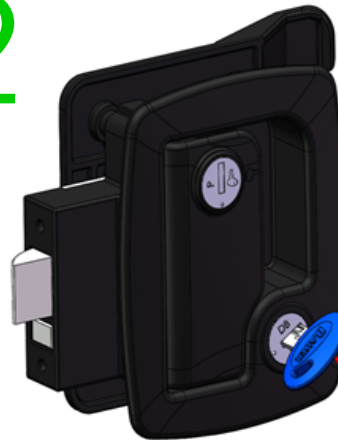
**BAUER RV Control
Key MUST BE USED
FOR INSTALLATION
AND REMOVAL OF
BAUER LOCK
CYLINDERS TO
PREVENT DAMAGE**



2



Insert **BAUER** RV P Lock
Cylinder into Lock Core
as shown. Lock Cylinder
will go all the way in if
alignment is correct.

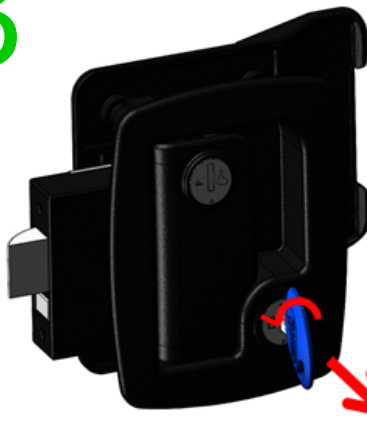


Insert **BAUER** RV DB Lock
Cylinder into Lock Core
as shown. Lock Cylinder
will go all the way in if
alignment is correct.

3



Rotate **BAUER** RV P Lock
Cylinder Counter
Clockwise Until Key Slot
is in Vertical Position as
shown and remove
BAUER RV Control Key



Rotate **BAUER** RV DB Lock
Cylinder Counter
Clockwise Until Key Slot
is in Vertical Position as
shown and remove
BAUER RV Control Key