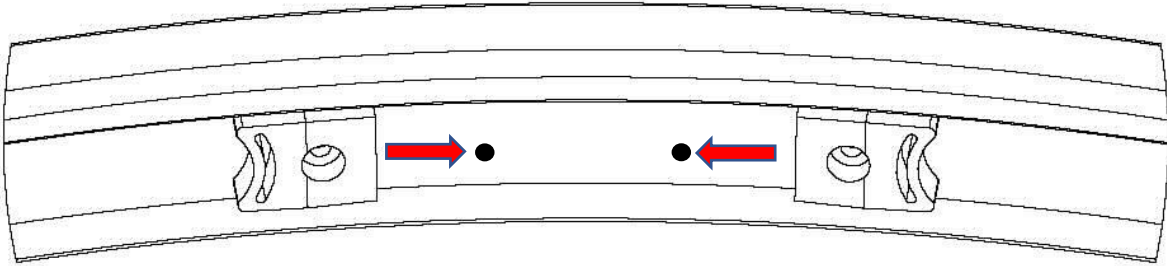




## ROUND DOOR BUMPER RELOCATION INSTRUCTIONS



### TOOLS NEEDED

- SCREW GUN WITH 1/8" DRILL BIT
- PHILLIPS HEAD SCREW DRIVER
- TAPE MEASURE
- PERMANENT MARKER

### INSTALLATION INSTRUCTIONS

1. REMOVE BUMPERS FROM TOP AND BOTTOM TRACKS.
2. LOCATE THE EXISTING PILOT HOLES AND DRILL A NEW 1/8" HOLE THAT IS 5/8" ON CENTER FROM ORIGINAL HOLE.
3. USING A PHILLIPS HEAD SCREWDRIVER, RE-ATTACH THE BUMPERS IN THE NEW LOCATION. I RECOMMEND USING A SCREW DRIVER OVER A SCREW GUN TO ENSURE THE SCREW/HOLE DOESN'T GET STRIPPED OUT.
4. CHECK THE BUMPERS BY ENSURING THE MAGNETS PROPERLY STRIKE IN THE MIDDLE.