



# FLIP TREAD STEP

INSTALLATION INSTRUCTIONS



STP-215  
STP-217



Above. Beyond. Always.





574.293.1581  
[www.MORryde.com](http://www.MORryde.com)

# FLIP TREAD STEP

## INTRODUCTION

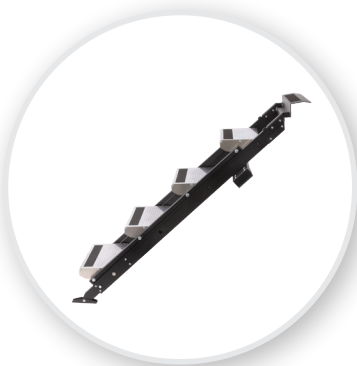
Self-contained flip up/flip down step tread RV entry/exit step system with a 400 lb weight capacity.

**Note:** Steps should only be lowered or raised/stowed from OUTSIDE of the RV.

-  **WARNING** – Never lower or raise/stow steps from the inside of the RV as this can result in great personal injury to yourself and/or others.
-  **WARNING** – Never raise/stow steps with yourself or anyone in the RV as this blocks a(n) emergency exit and may lead to personal injury to you and/or others.
-  **WARNING** – Never attempt to use the steps without ensuring both step legs are firmly on the ground with the foot pads in the correct orientation. Ensure legs are adjusted properly so that the step is level; failure to do so may lead to personal injury to you and/or others.
-  **WARNING** – Numerous pinch points exist at door, step and threshold so KEEP CLEAR of these areas during setup and take down..

### Tools Required:

- Impact Driver
- Tape Measure
- 7/16" Socket
- Ratchet
- Phillips Bit



Above. Beyond. Always.

574.293.1581  
www.MORryde.com

# FLIP TREAD STEP

## INSTALLATION INSTRUCTIONS

### STEP 1

Remove the step transition strip between the threshold of the existing door and the floor.



### STEP 2

Place the Flip Tread Steps in the center of the door opening. Adjust the steps until the hinge plate is centered.

### STEP 3

Lift the steps and lock into place. Ensure that the latches have engaged with the flange of the door jamb. The latches may need to be adjusted in or out; this can be accomplished by loosening the bolts with a 7/16" socket and adjusting them into place.

### STEP 4

Slide the front of the hinge plate up to the inside of the threshold so that it sits flush.

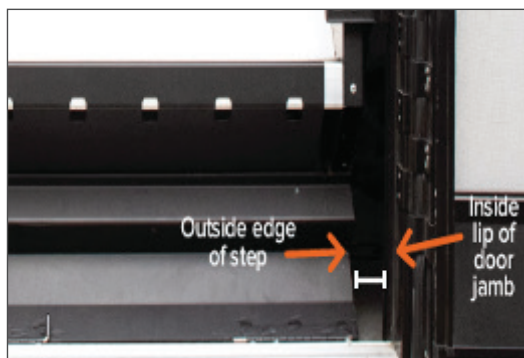


# FLIP TREAD STEP

## INSTALLATION INSTRUCTIONS

### STEP 5

With the Steps located in the center of the door opening, measure the distance between the inside lip on the door jamb and the outside edge of the step. The clearance on each side should be at least 1/8".



**Note:** Mount screws are taped to the 2nd tread next to the traceability sticker.

### STEP 7

Lower the steps and then shut both the screen door and the outside door to ensure they close properly with the steps in the lowered position.

### STEP 6

Mount the (2) outermost screws onto both sides of the Flip Tread Steps hinge plates.



### STEP 8

Raise the Steps into the locked position and secure both hinge plates with the remaining screws.

**Note:** The legs of the Flip Tread Steps are adjustable and may need to be retracted in order to fit inside the door opening.



### STEP 9

Raise, lock and lower the steps a couple of times to ensure they operate correctly and that the latches are in the correct adjustment.



Above. Beyond. Always.

FLIP TREAD STEP | Version 1

574.293.1581  
[www.MORryde.com](http://www.MORryde.com)