



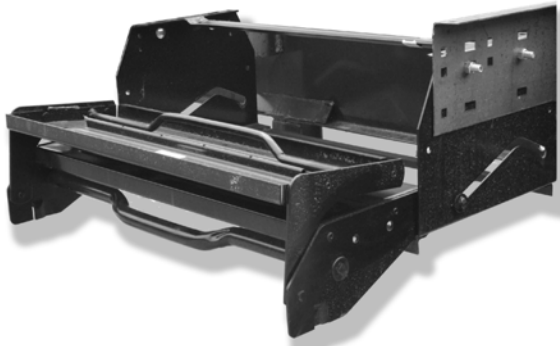
## **LCI DOUBLE STEP OPERATION GUIDE**



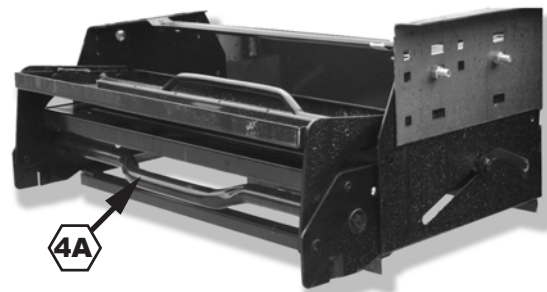
**1. LCI Double Step fully extended.**



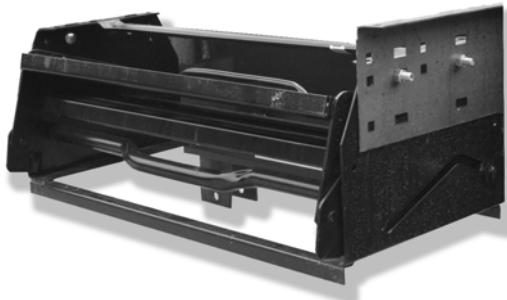
**2. Fold bottom step up to store.**



**3. Bottom step rests on top step to be stored.**



**4. Grasp step handle (4A) firmly and push entire step assembly back .**  
**NOTE:** Top step slides back, it does not fold.



**5. LCI Double Step in stored position.**