

BASECAMP™ LEVELING SYSTEM

QUICK REFERENCE GUIDE

PRIOR TO OPERATION

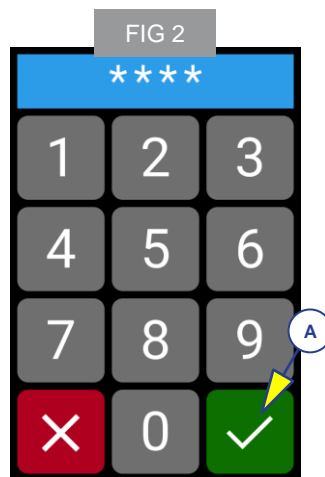
The trailer is parked on a reasonably level surface.

Ensure the system is connected to a fully charged, 12V Automotive/Marine/RV approved battery with a minimum rating of 500 CCA, 625MCA, and with a capacity of at least 60 Ah.

All persons, pets and property are clear of the trailer. The RV will move when the leveling system is activated.

ACCESS

Open the touchscreen door. If the touchscreen is off, tap on the touchscreen to activate. Enter the default pin, 5241 and press the GREEN CHECK button. (Fig. 2A)



The touchscreen menu changes depending on prior actions. Extending and retraction the landing gear can always be done from the ARRIVAL and DEPARTURE screens (Figs. 3A, 3B)

To reach the ARRIVAL or DEPARTURE screens from the CAMPING screen, press the back arrow (Fig. 3C)

HITCHING INSTRUCTIONS

1. Press and hold EXTEND (Figs. 3D or 3F) to extend the landing gear jacks and RETRACT (Figs. 3E or 3F) to retract the landing gear
2. Connect to the tow vehicle and make sure the 5th Wheel and hitch are connected and locked.
3. Press and hold RETRACT (Figs. 3E or 3F) to put the weight of the RV onto the tow vehicle.
4. Press RETRACT ALL (Fig. 3H) to automatically retract all the jacks.
5. Close the touchscreen after use to protect it.

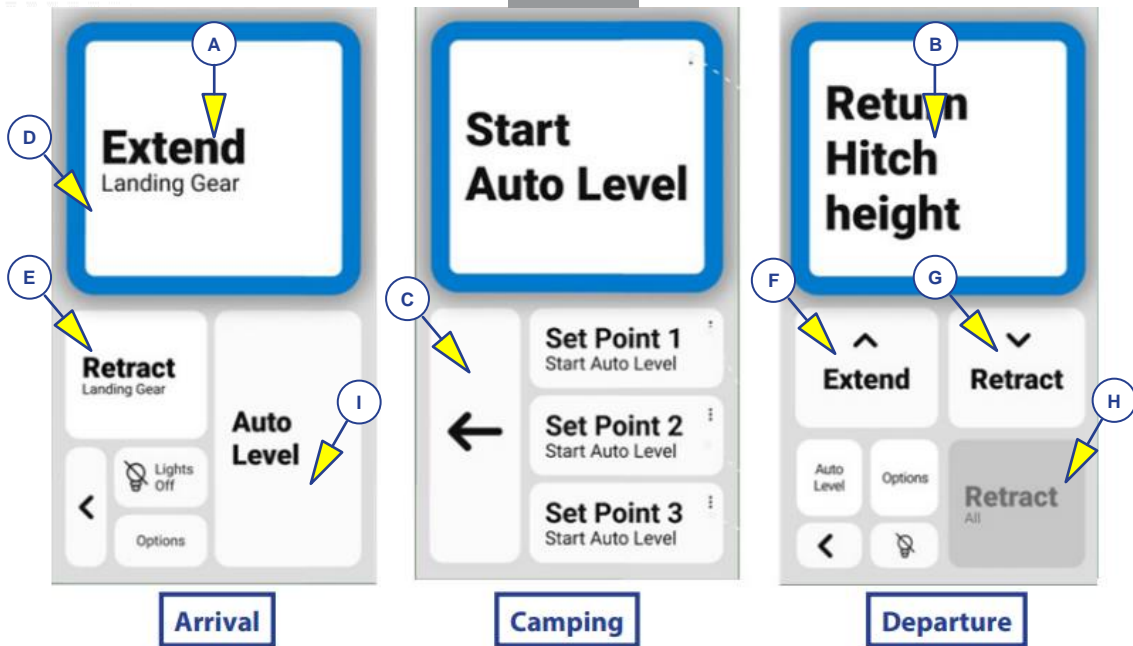
BASECAMP™ LEVELING SYSTEM

QUICK REFERENCE GUIDE

UNHITCHING INSTRUCTIONS

1. Press and hold **EXTEND** (Figs. 3D or 3F) to extend the landing gear jacks and **RETRACT** (Figs. 3E or 3F) to retract the landing gear
2. Take the weight off the tow vehicle and disconnect the hitch.
3. Drive the tow vehicle a safe distance away from the RV.
4. Close the touchscreen after use to protect it.

FIG 3



FAULTS

You may encounter a fault while using the system. Step by step instructions for trouble shooting will appear on the fault screen, along with a QR code (Fig. 4A) which will take you to additional troubleshooting information.

To hide the fault, press **HIDE MESSAGE** (Fig. 4B).

Some faults may require you to clear the fault before proceeding. Press **CLEAR FAULT** (Fig 4C) to do so.

The most common fault is when the voltage drops so low during operation that the system cannot operate. Ensure you always start with a fully charged battery.

For other common faults, such as Jack Out of Stroke faults, re-hitch and re-position the RV.

FIG 4

