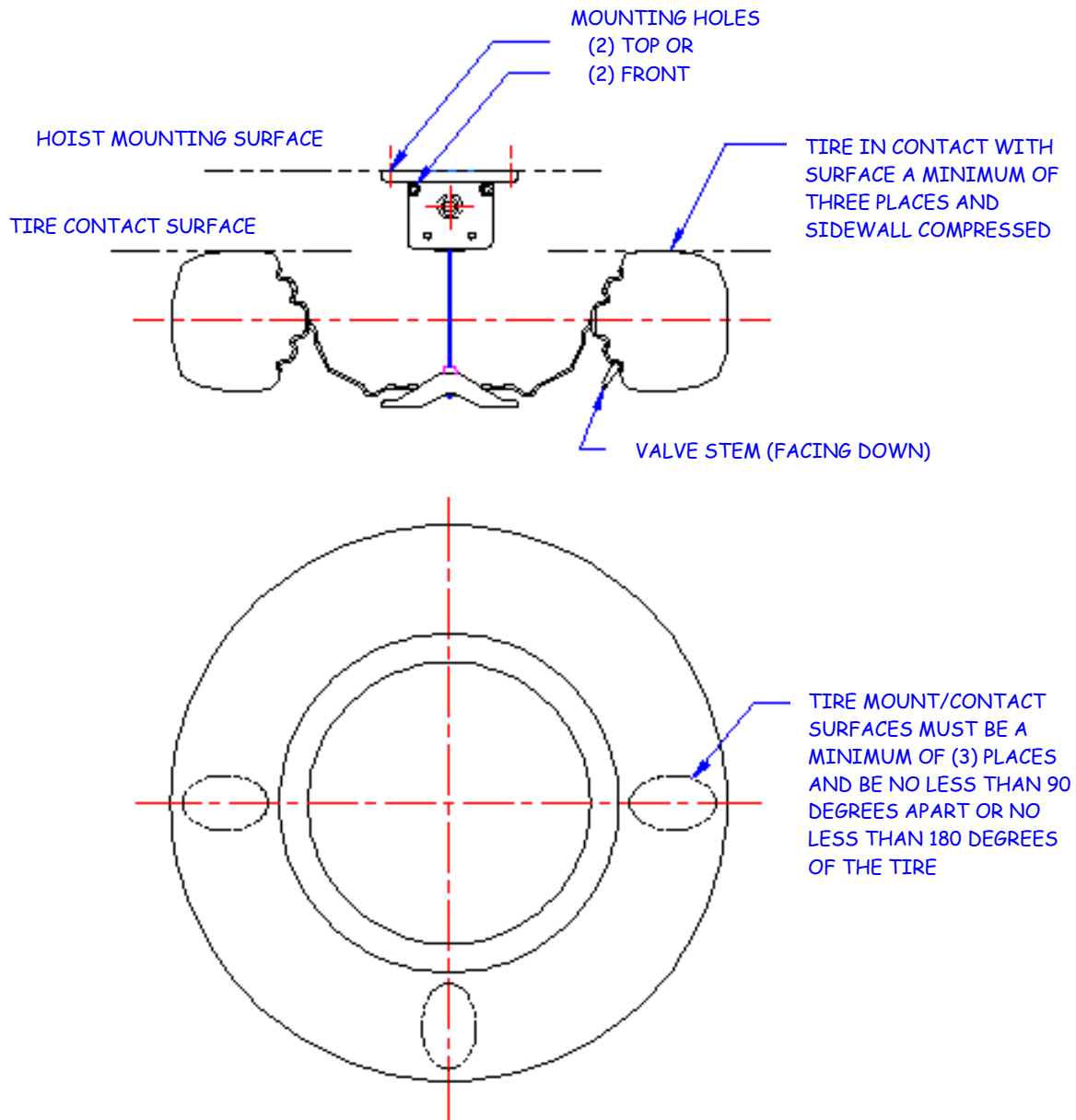
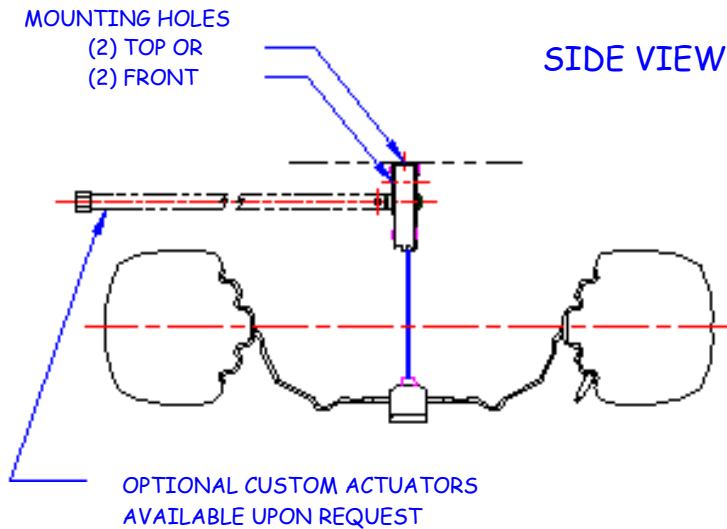


## RV SPARE TIRE -- STOWING INSTRUCTIONS



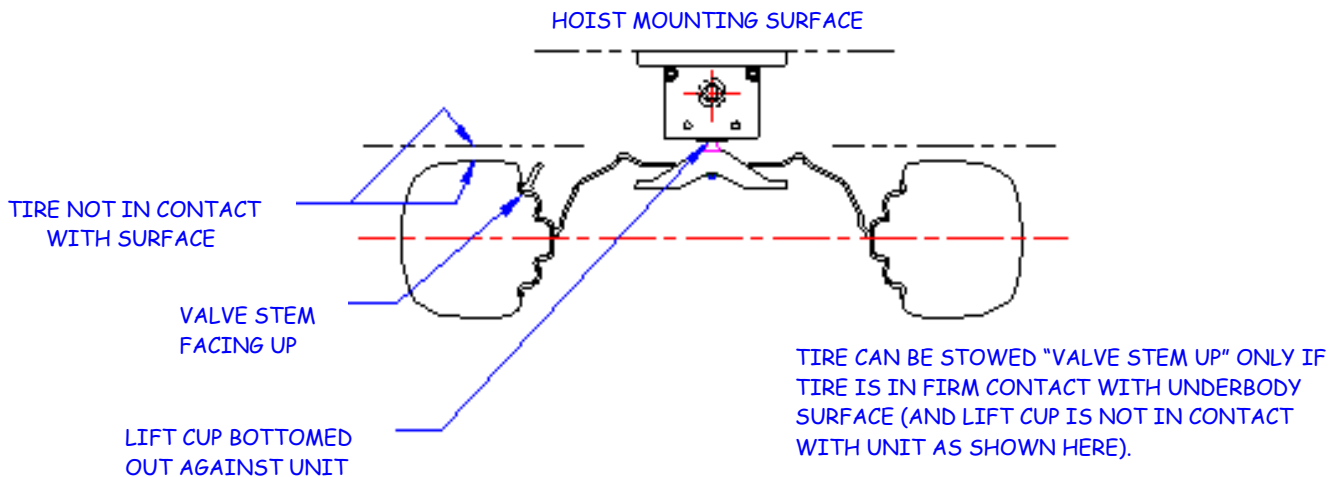


## NOTES:

UNIT HAS A CLUTCH OVERLOAD DEVICE. UNIT MUST BE WOUND UP UNTIL A "CRISP BREAK" IS HEARD AND FELT. THIS IS CALLED "GOING THROUGH OVERLOAD" BY THE CLUTCH. UNIT WINDING SHOULD CONTINUE UNTIL A SECOND "CRISP BREAK" OCCURS. THIS ASSURES THAT THE UNIT IS IN "OVERLOAD" (OR LOCKED) AND THE MAXIMUM STOWING FORCE IS APPLIED TO HOLD THE TIRE.

MAXIMUM CAPACITY OF THE UNIT IS 200 LBS (TIRE & WHEEL). FOR USE WITH HEAVIER LOAD, CONTACT TECA.

DO **NOT** USE IMPACT WRENCHES TO DRIVE UNIT. SERIOUS DAMAGE MAY RESULT!



## WRONG WAY TO STOW / CARRY SPARE TIRE