



MaxxFan Troubleshooting





❖ K- model MaxxFans - Produced from August 2008 thru Present

- ❖ Electronic Speed Control (4 or 10 speeds)
- ❖ Ceiling Fan Mode – fan can run with Lid closed
- ❖ Dual Lifter Arms
- ❖ Sealed ball-bearing fan motor
- ❖ Thermostat available on some models
- ❖ Intake / Exhaust & Exhaust-Only models available
- ❖ 12volts DC, 4.0 amps maximum
- ❖ Plug and play cables for wall controls
- ❖ Deluxe & Standard models





- ❖ Serial Number –
Indicates production date
Required to ensure correct
spare parts

- ❖ YYYY-MM-PPPPK-XXXX

YYYY = Year of production

MM = Month of production

PPPPK = Fan Model

XXXX = Sequential number



All models
have serial
number label
underneath
Round Interior
Screen



Deluxe models
have serial
number label
on outside,
rear of body
below Rain
Shield



Standard
models have
serial number
label
underneath lid





K Series Models

❖ PCB – 3 different families

PCB#1 – Full Function

Manual Lift (5100K, 6200K, 4000K, 4050K) – 10-21276K-V3.8

Electric Lift (4500K, 7000K, 7500K, 4700K, 4900K, 8700K, 8900K)
– 10-21275K-V3.8

PCB#2 – Limited Function

Electric Lift (4751KS, 4951KS, 8751K, 8951K) – 10-04751K-V1.1

PCB#3 – Basic Function

Manual Lift (4301K, 4401K, 5301K, 6401K) – 10-04301K-V1.5





K Series Models

❖ Operator Mechanism –

Manual Lift – 10-20281K-3CF (long output shaft)

Electric Lift – 10-20281K-1AF (short output shaft)

New 'F' version with mounting feet is universal and replaces all previous 'K' model Operators

❖ Lift Arm

All Models – 10-20222KS

New 'S' steel version is universal and replaces all previous 'K' model Lift Arms

❖ Fan Blade

All Models – 10-20258KS

New 'S' steel hub version is universal and replaces all previous 'K' model Fan Blades



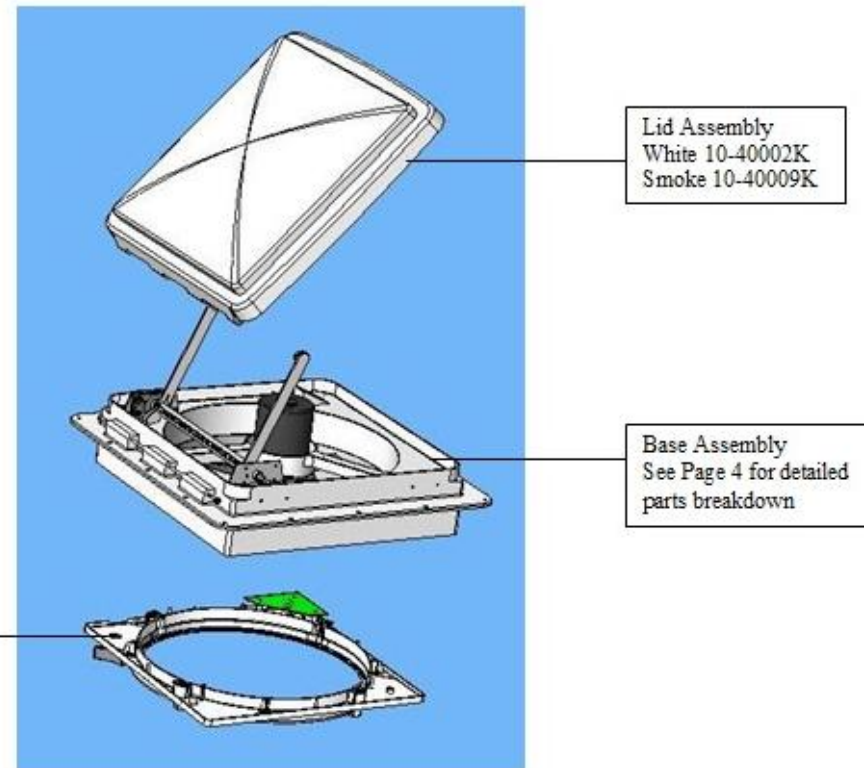
MAXxFAN

Standard Models

MAXxAIR[®]

VENTILATION SOLUTIONS

MaxxFan Standard Models 4000K – 4900K



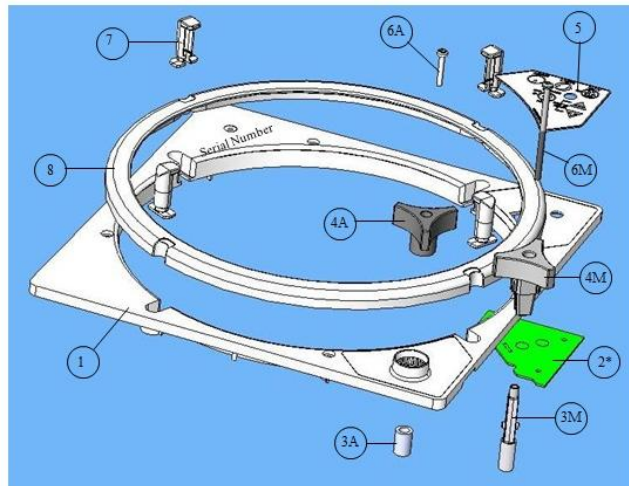
MAXxAIR[®]

VENTILATION SOLUTIONS

AIRXCEL[®]
RV Group



Control Plate Assembly

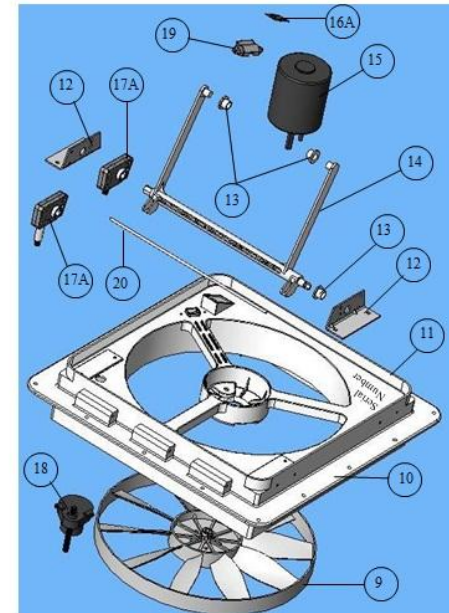


Code	Used On Models	Part Number	Description	Number Required
1	All	05-20226KS	Control Plate	1
2M*	4000K - 4001K	10-21276K-V3.8	Printed Circuit Board	1
2A*	4500K - 4900K	10-21275K-V3.8	Printed Circuit Board	1
3M	4000K - 4001K	10-21232K	Locking Knob Shaft	1
3A	4500K - 4900K	10-20277K	Lift Motor Coupler	1
4M	4000K - 4001K	05-21236K	Locking Knob	1
4A	4500K - 4900K	10-20223K	Knob, 3 Wing	1
5	4000K, 4050K	10-21299K	Keypad	1
5	4001K, 4051K	10-21300K	Keypad	1
5	4301K, 4401K	10-43010K	Keypad	1
5	4500K, 4800K	10-40005K	Keypad	1
5	4501K, 4801K	10-40006K	Keypad	1
5	4700K, 4900K, 4751K, 4751KS, 4951K, 4951KS	10-40209	Keypad, Blank Label	1
6M	4000K - 4001K	10-21241K	Locking Knob Screw	1
6A	4500K - 4900K	10-20265K	Knob Screw, 3 Wing	1
7	All	05-21233K	Finger, Screen	4
8	All	05-30925	Round Interior Screen	1
ns	All	10-20211K	Garnish Ring, Interior	1

Note: M = Manual Opening Models
A = Automatic (Remote) Opening Models
ns = Not Shown

Standard Models

Base Assembly Detail



Code	Used On Models	Part Number	Description	Number Required
9	All	10-20238	Fan Blade	1
10	All	10-40012K	Base	1
11	All	10-20233K	Rubber Seal	1
12	All	10-40011K	Bracket - deleted on newer models	2
13	All	10-20287K	Bushing	3
14	All	10-20222KS	Lifter Arm	1
15	All	10-20966	Fan Motor	1
16A	4500K - 4900K	10-40007K	Ram Sensor	1
17M	4000K - 4001K	10-20281K-3CF	Operator Mechanism, Manual Lift	1
17A	4500K - 4900K	10-20281K-1AF	Operator Mechanism, Automatic Lift	1
18	4500K - 4900K	10-20270	Lift Motor	1
19	All	10-40013K	Wire Cover	1
20	All	10-40003K	Lid Hinge Pin	1

Note: M = Manual Opening Models
A = Automatic (Remote) Opening Models



MAXAIR
VENTILATION SOLUTIONS

AIRXCEL
RV Group



K Series Models

MaxxFan K - Series Troubleshooting

PROBLEM	CAUSE	SOLUTION
No Operation	Low Voltage	Correct power supply - minimum 10.5 volts DC required
	Loose power connections	Check power connections
	Defective PCB	Replace PCB
No Thermostat Operation	Low voltage	Correct power supply - minimum 10.5 volts DC required
	Thermostat circuit board	Replace PCB
Fan Runs in One Direction Only (Intake/Exhaust models Only)	Defective relay	Replace PCB
Fan Runs on One Speed Only	Defective PCB	Replace PCB
No Manual Lid Operation	Broken Operator Mechanism	Replace Operator Mechanism
	Broken knob shaft	Replace knob shaft
	Broken knob	Replace knob
Vent Lid Motor Runs but Lid Does Not Open or Close (Electric Lift models Only)	Broken Operator Mechanism	Replace Operator Mechanism
	Broken Lift Motor	Replace lift motor





K Series Models

(cont)

MaxxFan K - Series Troubleshooting

PROBLEM	CAUSE	SOLUTION
Vent Lid Motor Does Not Turn (Electric Lift Models Only)	Loose plug connector	Check lift motor connector
	Defective Circuit Board	Replace PCB
	Defective Lift Motor	Replace lift motor
Fan Beeps Continuously	Short circuit on PCB	Replace PCB
Noisy Fan Motor	Brushes in Fan Motor not seated	Run fan on high speed for 24-48 hours to seat brushes
	Defective Fan Motor	Replace fan motor
	Excessive runout of Fan Blade	Replace fan blade
HandHeld Remote Does Not Operate Fan (Remote Control models only)	Weak batteries in HHR	Replace batteries in HHR
	HHR signal not reaching fan	Point HHR directly at fan to operate
	Defective HHR	Replace HHR
	Defective IR sensor on fan	Replace PCB

