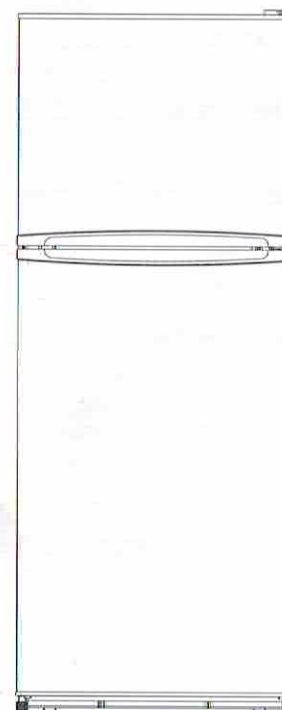


EVER❄CHILL

10.7 CU. FT. TOP MOUNT REFRIGERATOR INSTRUCTION MANUAL

Model No.: WD-282FWDC



To ensure proper use of this appliance and your safety, please read the following instructions completely before operating this appliance.

TABLE OF CONTENTS

STRUCTURE ILLUSTRATION	3
IMPORTANT SAFETY INSTRUCTIONS.....	4
INSTALLATION INSTRUCTION	4
OPERATING YOUR REFRIGERATOR	5-6
FREEZER COMPARTMENT OPERATION	6
CARE & MAINTENANCE	7
INSTALLATION.....	8
TROUBLESHOOTING GUIDE.....	9

Normal use and Trouble Shooting

1. In case of temporary touch problems, make sure to turn on after 3 seconds when in resetting the system. When power shutting down less than 3 min, must delay 3 min to restart.
2. **TroubleShoot**
 1. You have fan stops spinning, system will make a long and short sound. When problem is resolved, it will be normal.
 2. When compressor stops, system will make continuous short and long sound to remind you to have it repaired. The sound will stop after power shut down.

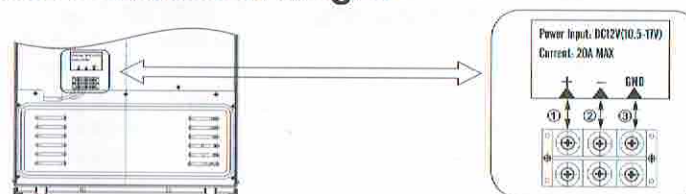
Usage note

1. This DC fridge is 12V, actual working voltage can flow from 10.5-17V. Compressor will stop when lower than 10.5V.
2. This require DC power source, 10.5-17V, electricity $\geq 15A$. Direct connection with AC power source is forbidden.
3. Working temp must be lower than 43°C, or the compressor will stop operating.
4. In order for a normal use, the connection must be reliable. Besides the power source proper connection, the wire of the fridge and outer wire must meet the following requirement:

Wire size	The max length (Feet)
14 AWG	3.2 Feet
13 AWG	8 Feet
12 AWG	13 Feet
10 AWG	20 Feet
8 AWG	33 Feet
6 AWG	50 Feet
Remarks:	14 AWG Wire is not recommended to be used, 13 AWG or wire size bigger than 13 AWG will be recommended. The DC fridge don't equipped with the power source. Pls buy the power source in local authorized dealer.

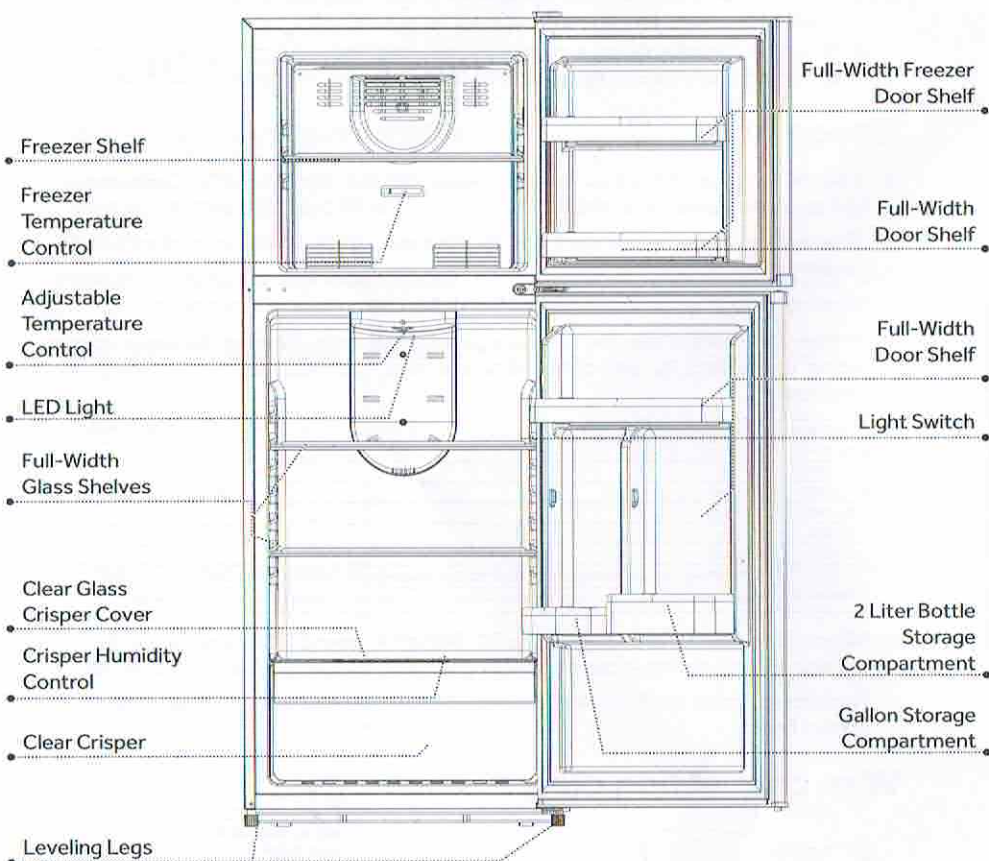
5. When using adaptor to change AC to DC, Negative ground DC power supply is the first choice, you have choice reliable grounding device to avoid electric shock.
6. Non professionals are forbidden to dismantle the drive board of compressor and control board.

Wire connection diagram



1. Connect this terminal with Positive pole of 12V DC.
2. Connect this terminal with Negative pole of 12V DC.
3. The GND terminal shall be connected with the RV shell, in which the material shall be steel.

Structure Illustration



Important Safety Instructions



WARNING

To reduce the risk of fire, electrical shock, or injury follow these basic precautions when using your refrigerator.

- **DANGER:** Risk of child entrapment. To avoid the possibility of child entrapment, please take the following precautions before you dispose of your refrigerator.
 - Remove all doors.
 - Leave shelves in place so children may not easily climb in.
 - Never allow children to play with, operate, or crawl inside the refrigerator.
- Do not store or use gasoline or any flammable vapors and liquids in the vicinity of this refrigerator.
- All refrigeration products contain refrigerants, which under the guidelines of federal law must be removed before disposal. It is the consumer's responsibility to comply with federal and local regulations when disposing of this product.
- This appliance is not intended for use by persons (including children) with reduced physical, sensory or mental capabilities, or lack of experience and knowledge, unless they have been given supervision or instruction concerning use of the appliance by a person responsible for their safety.
- Children should be supervised to ensure that they do not play with the appliance.
- If the SUPPLY CORD is damaged, it must be replaced by the manufacturer, its service agent or similarly qualified person in order to avoid a hazard.

Installation Instructions

Before Using Your Refrigerator

- Remove the exterior and interior packing.
- Before connecting the refrigerator to the power source, let it stand upright for approximately 4 hours. This will reduce the possibility of a malfunction in the cooling system from improper handling during transportation.
- Clean the interior surface with lukewarm water using a soft cloth. (Cleaning instructions on page 7)

Location

- Must leave out. This appliance is designed to be free standing only.
- Allow 1 inches clearance space between the back and sides of the refrigerator, which allows the proper air ventilation.

Avoid Installation:

- On weak surfaces unable to support refrigerator when fully loaded.
- In direct sunlight and sources of heat (stove, heater, radiator, etc.). Ambient temperature below 50°F or above 85°F will hinder the performance of this appliance.

Installing Your Refrigerator

- Adjust the leveling feet to keep the refrigerator level.
- Plug the refrigerator into dedicated, properly installed-grounded wall outlet. Do not under any circumstances cut or remove the third (ground) prong from the power cord.
- After plugging the appliance into a wall outlet, turn the unit on and allow the unit to cool down for 24 hours before placing food in the refrigerator or freezer compartment.

Electrical Connection



WARNING

Improper use of the grounded plug can result in the risk of electrical shock. If the power cord is damaged, have it replaced by an authorized service center.

This refrigerator should be properly grounded for your safety.

Do not, under any circumstances, cut or remove the third ground prong from the power cord supplied.

This refrigerator requires a standard 10.5-17V, electricity $\geq 15A$. Direct connection with AC power source is forbidden.

This refrigerator is not designed to be used with an inverter.

The cord should be secured behind the refrigerator and not left exposed or dangling to prevent accidental injury.

Never unplug the refrigerator by pulling the power cord. Always grip the plug firmly and pull straight out from the receptacle.

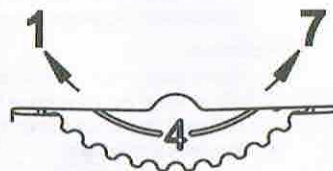
Do not use an extension cord with this appliance. If the power cord is too short, have a qualified electrician or service technician install an outlet near the appliance. Use of an extension cord can negatively affect the performance of the unit.

Operating Your Refrigerator

Temperature Control

The temperature control is located inside the refrigerator compartment on the top. The refrigerator compartment temperature control ranges from "1", cold setting, to "7", coldest setting. The first time the unit is turned on, adjust the temperature control knob to a higher (colder) setting and run for at least 24 hours before readjusting the temperature and placing food inside. This will ensure the cabinet is thoroughly chilled before food is placed into the refrigerator.

If you choose to change the thermostat setting, adjust the thermostat by one increment at a time. After each movement of the control knob, allow several hours for the unit to adjust completely. Large amounts of food may lower the cooling efficiency of the appliance.



NOTE

If the unit is unplugged or loses power; you must wait 3 to 5 minutes before restarting the unit. If you attempt to restart before this time delay, the refrigerator may not start.

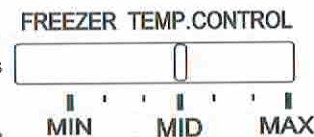
Replacing the Interior Light

Before removing the light bulb, turn the refrigerator temperature control to the "1" position. Then unplug the electrical cord from the wall outlet. Failure to do so may result in electrical shock or personal injury. Replace the old bulb with a new bulb of the same wattage and size.

Freezer Compartment Operation

Temperature Control

Your refrigerator has one control for regulating the temperature in the freezer compartment. The freezer temperature control is located on the freezer compartment's interior back panel. For the best performance, leave the freezer control at the midpoint and adjust the refrigerator compartment temperature control. Adjust the freezer control one increment at a time until the desired temperature is reached.



Ice Tray

To make ice, pour cool water into ice tray and place it in the freezer for two hours. To release ice cubes, twist the ice tray and the ice cubes will separate from the ice tray. To shorten the time of making ice, you can set the temperature control knob at a colder position.



NOTE

Do not store canned foods or food stored in glass containers in the freezer compartment.

The Freezer Compartment

This compartment is designed for the long-term storage of frozen food. The storage life of frozen foods varies and the recommended storage time should not be exceeded. Place frozen food into the freezer as quickly as possible after purchase. If there are instructions on the packet, carefully follow these instructions regarding storage times.

Care and Maintenance

Cleaning Your Refrigerator

- Disconnect the electrical unit from the wall outlet.
- Clean interior and parts with a cloth soaked in lukewarm water and baking soda solution. A solution of 2 tablespoons baking soda to a quart of water will clean and neutralize odors. Rinse and wipe dry.
- Be sure to keep the door gasket (seal) clean to keep the unit running efficiently.
- The outside of the refrigerator should be cleaned with a warm damp cloth and mild detergent. Do not use harsh or abrasive cleaners.
- Never clean refrigerator parts with flammable fluids. The fumes can create a fire hazard.

Vacation Time

- For long vacations, remove all food. Then, unplug the electrical cord from the wall outlet.
- Clean the interior and leave doors open to avoid possible odor or mold formation.
- Use extreme caution in the case of children. The unit should not be accessible to child's play.

Moving Your Refrigerator

- Disconnect the electrical cord from the wall outlet.
- Remove all the food and securely tape down all loose items such as shelves, drawers, and doors.
- Be sure the refrigerator stays in the upright position during transportation.

Energy Saving Tips

- The refrigerator should be located in the coolest area of the room, away from heat producing appliances or heating ducts, and out of the direct sunlight.
- Let hot foods cool to room temperature before placing in the refrigerator.
- Be sure to wrap foods properly, and wipe containers dry before placing them in the refrigerator. This cuts down on frost build-up inside the refrigerator.
- Organize and label food to reduce door openings and extended searches

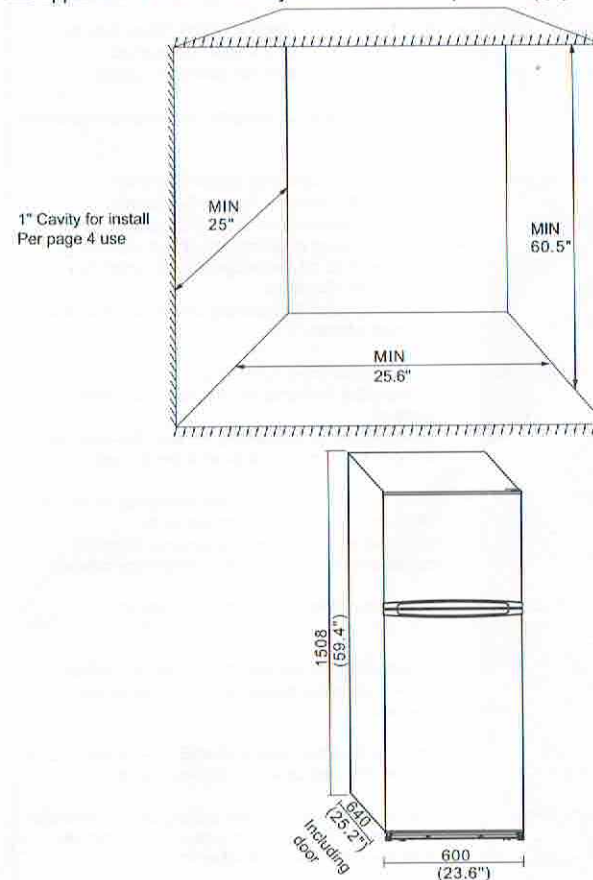
Installation

Install the refrigerator in a convenient location away from extreme heat and cold. Allow sufficient clearance between the refrigerator and side wall so the door(s) will open without obstruction. Refrigerator is not designed for recessed installation.

Select a space with strong level floor.

Allow 1 inches of space between the refrigerator's side and the wall.

The appliance must be correctly connected to the power supply.



- Note: The door should protrude at least 1" beyond the surrounding cabinets.

Troubleshooting Guide

You can solve many common refrigerator problems easily, saving you the cost of a possible service call. Try the suggestions below to see if you can solve the problem before calling for service.

Problem	Possible Causes
Refrigerator does not operate	<ul style="list-style-type: none"> • Refrigerator is unplugged. • The circuit breaker is tripped/ fuse blown.
Compressor turns on and off	<ul style="list-style-type: none"> • The room temperature is warmer than normal • Door is left open or is frequently opened. • The refrigerator does not have the correct clearances. • The refrigerator has recently been disconnected for a period of time.
Refrigerator compartments are too warm	<ul style="list-style-type: none"> • Temperature control is not set correctly. • Door is left open or is frequently opened. • The door gasket does not seal properly. • A large amount of warm or hot food was stored recently. Wait for the refrigerator to reach its selected temperature. • The refrigerator has recently been disconnected for a period of time.
Vibrating or rattling (slight vibration is normal)	<ul style="list-style-type: none"> • Leveling legs need adjusting • Refrigerator is placed on an uneven or weak surface. • The refrigerator is touching the wall. Re-level the refrigerator and move it away from the wall.
Temperature of external refrigerator surface is warm	<ul style="list-style-type: none"> • The exterior refrigerator walls can be as much as 30°F warmer than room temperature. • This is normal while the compressor works to transfer heat from inside the refrigerator cabinet.
Moisture collects inside the refrigerator	<ul style="list-style-type: none"> • Door is left open or is frequently opened.
Moisture forms on outside of refrigerator	<ul style="list-style-type: none"> • Is normal in hot and humid weather. Air carries moisture into the refrigerator when doors are opened.
Bubbling or gurgling sounds (like boiling water)	<ul style="list-style-type: none"> • This is the normal sound of refrigerant (used to cool refrigerator) circulating throughout the system.
Popping or cracking sounds when compressor comes on	<ul style="list-style-type: none"> • This is normal. Metal parts undergo expansion and contraction, like hot water pipes. The sound will level off or disappear as refrigerator runs.
The door will not close properly	<ul style="list-style-type: none"> • The refrigerator is not on a level surface. • The gasket is dirty. • The storage basket is out of position.

Back of Refer Parts Removal

Compressor Board



Remove 4 hex head Philips screws holding the protective back cover in place.



Remove 2 philips screws holding power terminal on the back of the refer in place.



Remove 2 philips screws holding condensation catch pan.



Gently pull pan out and remove evaporation heater lines from the pan. They are retained by plastic slide in tabs.



Once you have the pan removed, remove the Philips retaining screw holding the compressor board in place.



Once the board is loose, remove the socket plug attached to the side of the compressor. Do Not Pry on the connector, it will cause damage to the compressor. It will come off with light pressure. Once free, remove spade connectors.

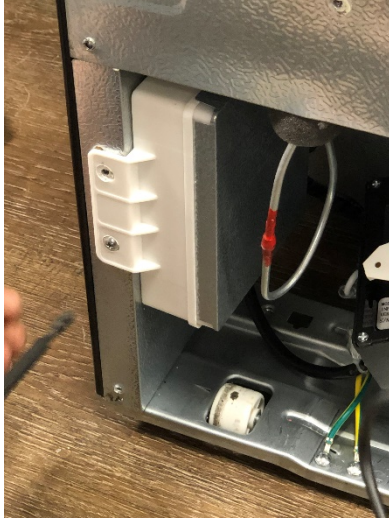
Control Board



Remove 4 hex head Philips screws holding the protective back cover in place.



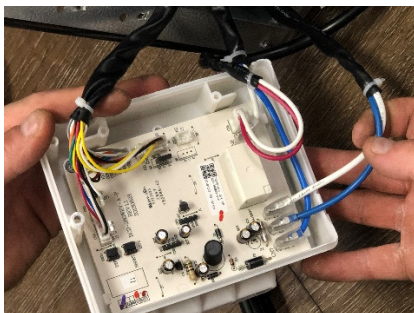
Remove 2 philips screws holding power terminal on the back of the refer in place.



Remove 2 philips screws holding the Control Board box to the left hand side of the refer.



Remove the Philips screw that holds the cover in place. Once that screw is removed the cover will pop off of the box.



Remove the retaining Philips screw holding the circuit board in the box and the board will pop out. Once it is removed, remove the spade connectors and the ribbon cable connectors.

Door Swing Change

To change the swing of the door on the BDE 280 Everchill 12v Refrigerator, you must move the hardware from one side of the doors to the other and make a small modification to the bottom hinge.

First, remove the protective cap over the top hinge of the refrigerator and carefully remove the screws holding the top hinge to the refer. Ensure that you do not let the freezer door fall off once you remove the bolts holding the hinge on. Once the top door hinge is removed, remove the door and set aside. The top hinge then must be moved to the opposite side of the refer and reinstalled in a later step.



Next carefully remove the middle hinge bracket from the refer. Ensure that when you remove the two bolts from the middle hinge that you do not let the fridge door fall and get damaged. Ensure that you do not lose either of the plastic washers on the hinges as they help keep the door opening and closing smoothly and they ensure proper spacing of the door. Remove fridge door and set aside.



Next remove the travel safety lock from the middle section opposite of the middle hinge you just removed.



Next remove the bottom hinge from the refrigerator and also remove the two leveling feet from the bottom of the refrigerator. Once the bottom hinge is removed, before you can reinstall it on the other side you must remove and swap the posts that hold the door to the bottom bracket with a flat head screwdriver and a socket/wrench on the bottom. One is longer which is the post the door sets on and one is shorter which is what the soft close post. Those are the two posts which must be swapped. Once the hinge posts are switched you may reinstall the hinge and leveling feet.



On the bottom of the refrigerator door there is a plastic soft close insert that must be taken off of the door, flipped over and moved to the other recessed pocket on the other side of the door. Uninstall by removing one screw and insert. Reinstall on the opposite side of the door in the recessed pocket for the insert and secure with the same screw you removed from the other side.



Once you have reinstalled the bottom hinge and moved the insert to the correct side, set the refer door back on carefully and close the door so it will stay in place.

Reinstall the middle hinge and plastic washers.

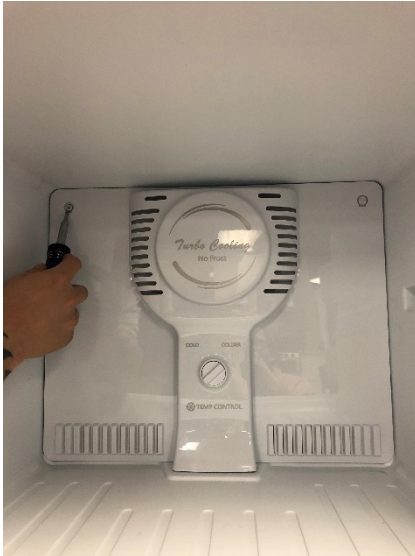
Upon reinstalling the middle hinge, you must remove the soft close insert that is attached to the freezer door bottom by removing single screw holding it in place. Once the insert is removed, take the insert from your hardware that comes inside of the back with your owner's manual located in the crisper drawer in the fridge. There is another insert inside of that packet which is for the opposite side of the door. These inserts are not interchangeable, and you must switch the insert for proper door operation.



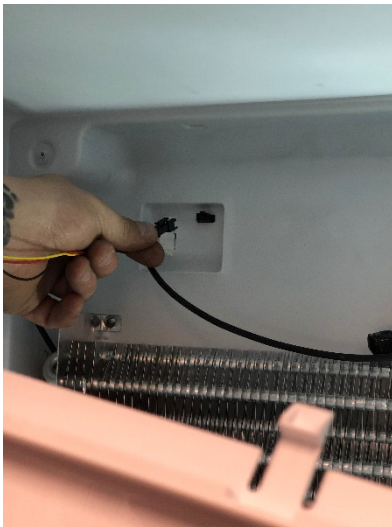
Once you have reinstalled the correct insert and you have reinstalled the middle hinge, set the freezer door on the hinge. Ensure that you do not let it fall off while the top hinge is not reinstalled.

Next, reinstall the top hinge to the fridge and you are done.

Fan

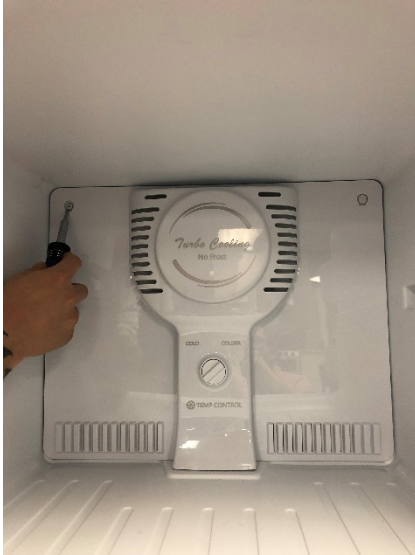


Remove two screws in top right and left corners of the back of the fridge. Pull forward and down to remove back cover. Be careful not to pull down to far because of connected components.

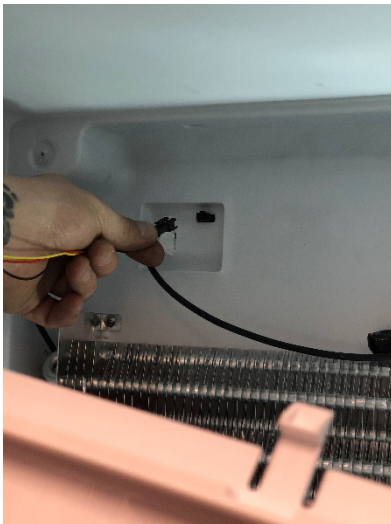


Disconnect quick connect on the back of the refer for the fan and remove back panel housing containing fan.

Thermostat



Remove two screws in top right and left corners of the back of the fridge. Pull forward and down to remove back cover. Be careful not to pull down to far because of connected components.



Disconnect quick connect on the back of the refer for the fan and remove back panel housing containing fan.



Pop off white housing on cooling coil located on the right hand side of the back of the refer.

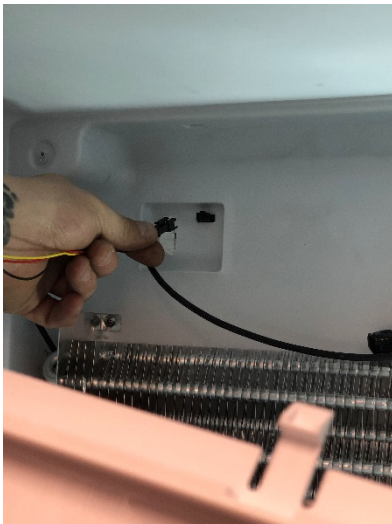


Unplug the quick connector from the back of the refer. Gently pull up on the thermostat to remove it from the housing.

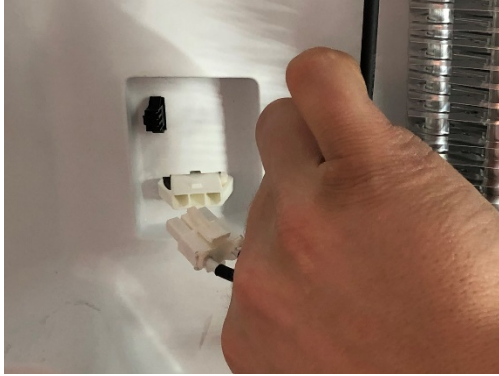
Defroster Heater



Remove two screws in top right and left corners of the back of the fridge. Pull forward and down to remove back cover. Be careful not to pull down to far because of connected components.



Disconnect quick connect on the back of the refer for the fan and remove back panel housing containing fan.



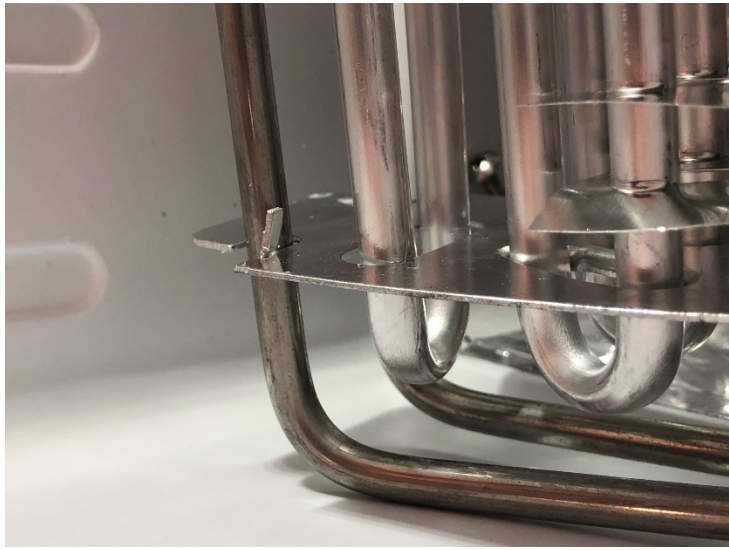
Disconnect defrost heater quick connector from the back of the refer.



Remove two screws holding the cooling element to the back of the refer.



Cut two zip ties holding the wires on either side of the cooling unit and remove the styrofoam spacers. You will need to keep them for reuse.

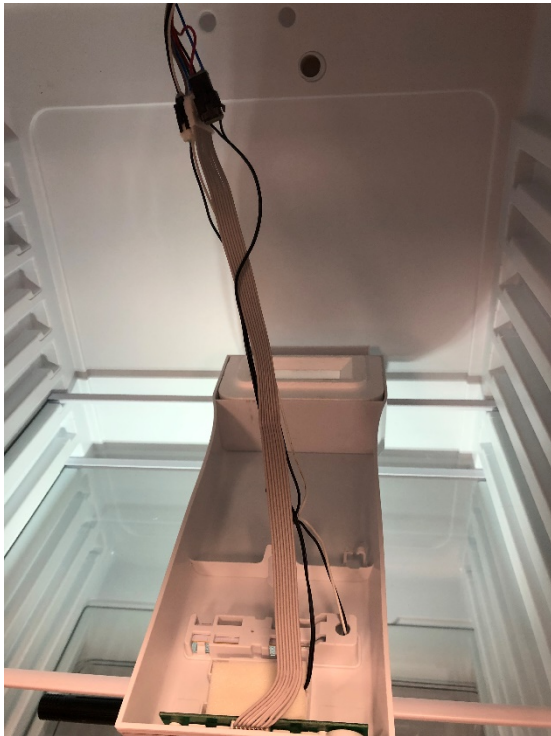


Bend up the tabs securing the defrost heater to the cooling element and pop the defrost heater off of the bottom of the cooling unit.

Fridge Control Board and Thermostat



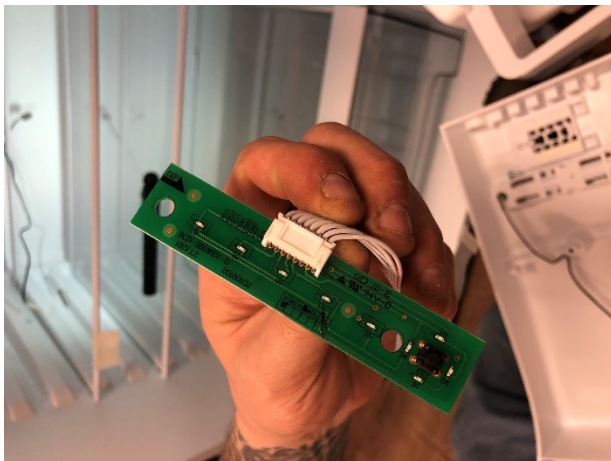
Remove Philips retaining screw



Gently pull down on the upper housing and it will come down. Be careful not to drop it.



Carefully remove two Philips screws holding the control board to the display face of the fridge.

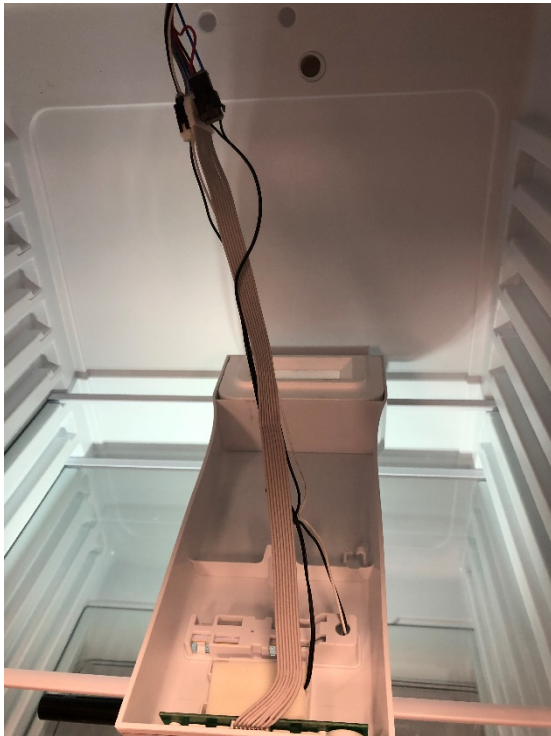


Detach the quick connector from the ribbon cable and remove the board.

Fridge Thermostat



Remove Philips retaining screw



Gently pull down on the upper housing and it will come down. Be careful not to drop it.



Disconnect thermostat from quick connector. Gently remove protective backing over the thermostat and gently lift to remove thermostat.