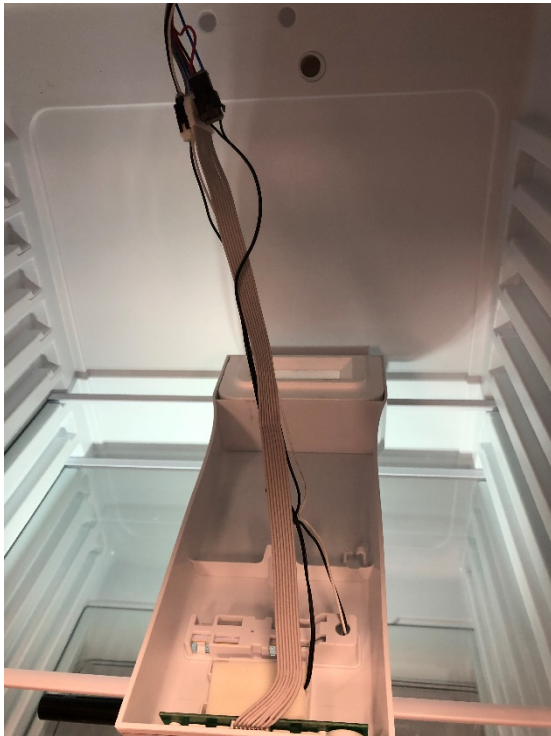


## Fridge Control Board and Thermostat



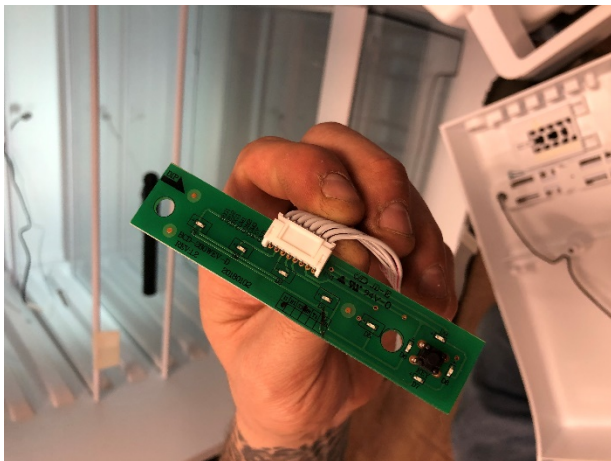
Remove Philips retaining screw



Gently pull down on the upper housing and it will come down. Be careful not to drop it.



Carefully remove two Philips screws holding the control board to the display face of the fridge.

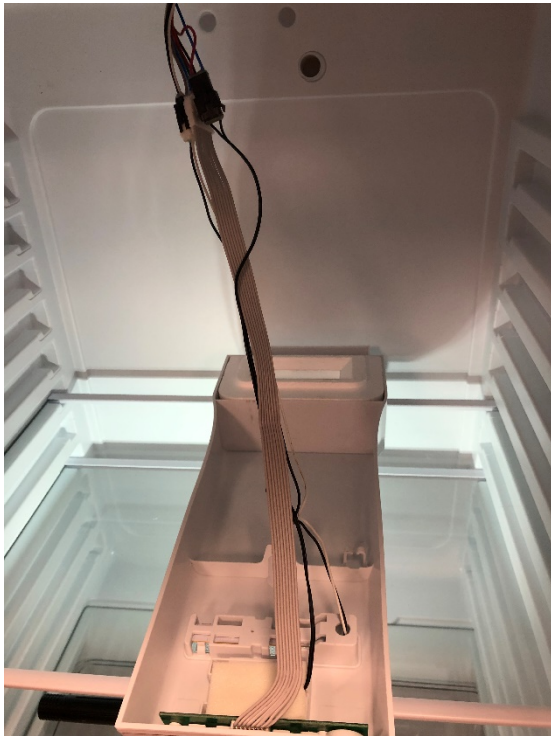


Detach the quick connector from the ribbon cable and remove the board.

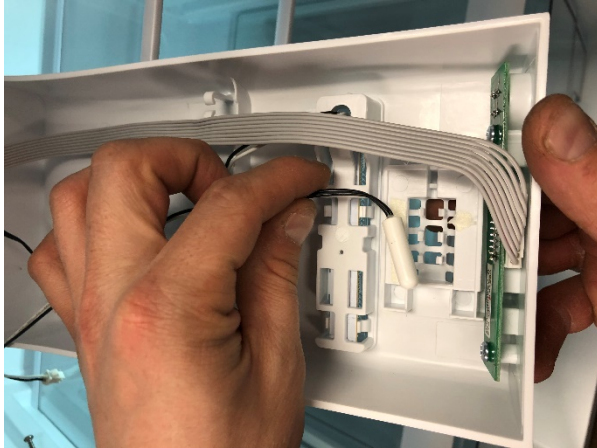
## Fridge Thermostat



Remove Philips retaining screw



Gently pull down on the upper housing and it will come down. Be careful not to drop it.



Disconnect thermostat from quick connector. Gently remove protective backing over the thermostat and gently lift to remove thermostat.