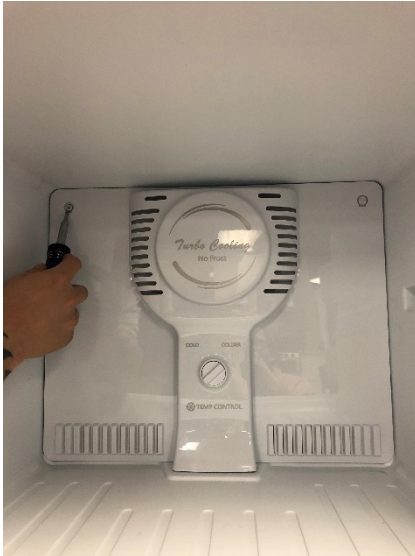
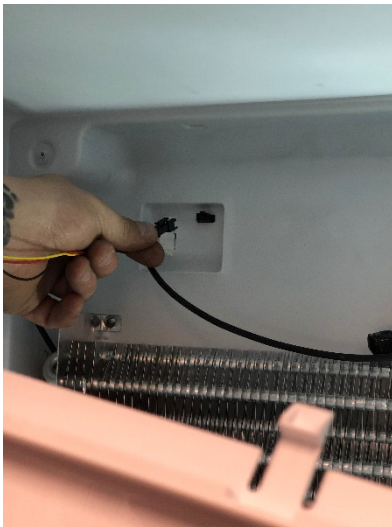


## Fan

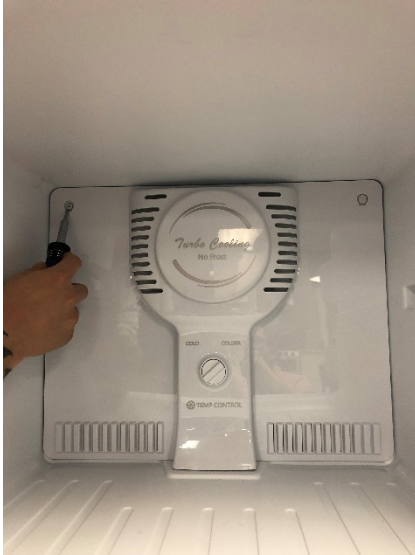


Remove two screws in top right and left corners of the back of the fridge. Pull forward and down to remove back cover. Be careful not to pull down to far because of connected components.

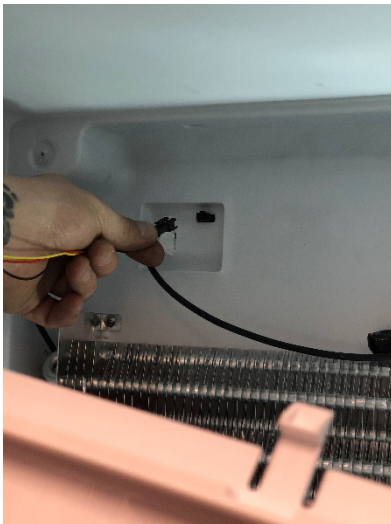


Disconnect quick connect on the back of the refer for the fan and remove back panel housing containing fan.

# Thermostat



Remove two screws in top right and left corners of the back of the fridge. Pull forward and down to remove back cover. Be careful not to pull down to far because of connected components.



Disconnect quick connect on the back of the refer for the fan and remove back panel housing containing fan.



Pop off white housing on cooling coil located on the right hand side of the back of the refer.

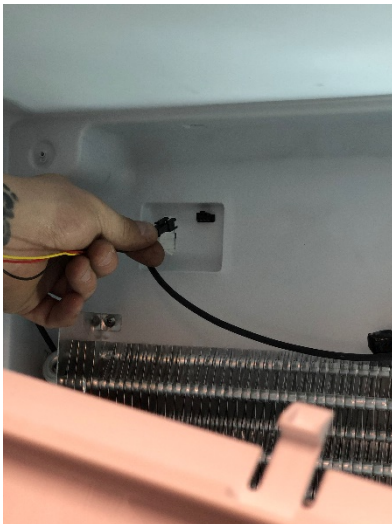


Unplug the quick connector from the back of the refer. Gently pull up on the thermostat to remove it from the housing.

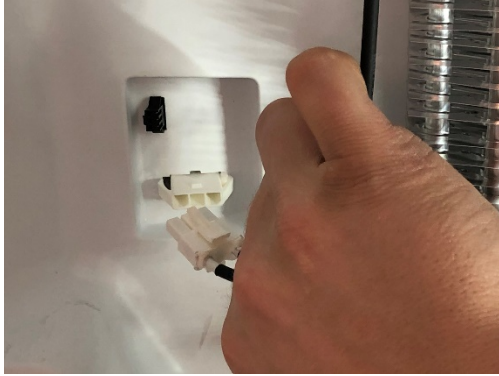
# Defroster Heater



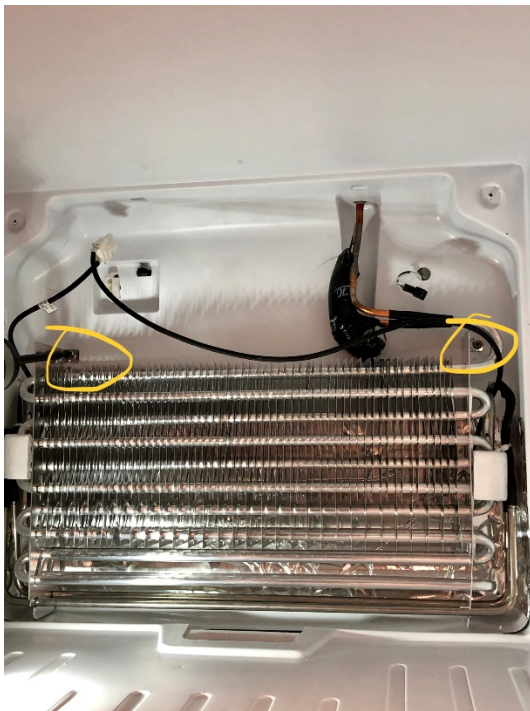
Remove two screws in top right and left corners of the back of the fridge. Pull forward and down to remove back cover. Be careful not to pull down to far because of connected components.



Disconnect quick connect on the back of the refer for the fan and remove back panel housing containing fan.



Disconnect defrost heater quick connector from the back of the refer.

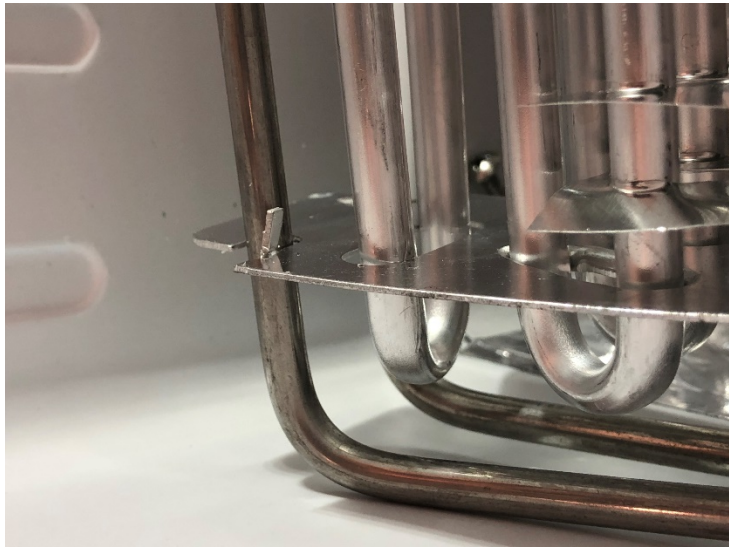


Remove two screws holding the cooling element to the back of the refer.





Cut two zip ties holding the wires on either side of the cooling unit and remove the styrofoam spacers. You will need to keep them for reuse.



Bend up the tabs securing the defrost heater to the cooling element and pop the defrost heater off of the bottom of the cooling unit.