

Back of Refer Parts Removal

Compressor Board



Remove 4 hex head Philips screws holding the protective back cover in place.



Remove 2 philips screws holding power terminal on the back of the refer in place.



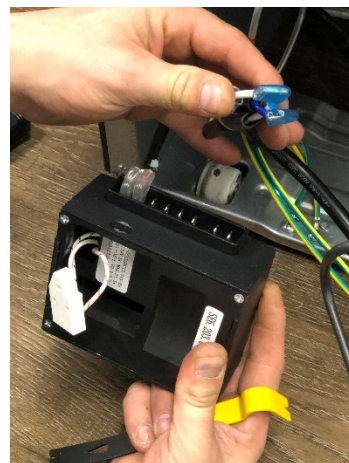
Remove 2 philips screws holding condensation catch pan.



Gently pull pan out and remove evaporation heater lines from the pan. They are retained by plastic slide in tabs.



Once you have the pan removed, remove the Philips retaining screw holding the compressor board in place.



Once the board is loose, remove the socket plug attached to the side of the compressor. Do Not Pry on the connector, it will cause damage to the compressor. It will come off with light pressure. Once free, remove spade connectors.

Control Board



Remove 4 hex head Philips screws holding the protective back cover in place.



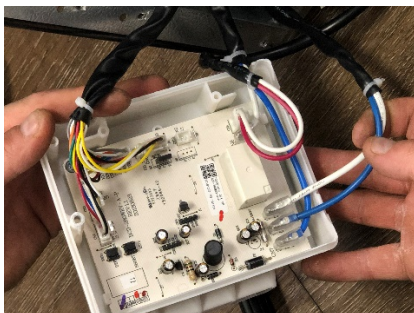
Remove 2 philips screws holding power terminal on the back of the refer in place.



Remove 2 philips screws holding the Control Board box to the left hand side of the refer.



Remove the Philips screw that holds the cover in place. Once that screw is removed the cover will pop off of the box.



Remove the retaining Philips screw holding the circuit board in the box and the board will pop out. Once it is removed, remove the spade connectors and the ribbon cable connectors.