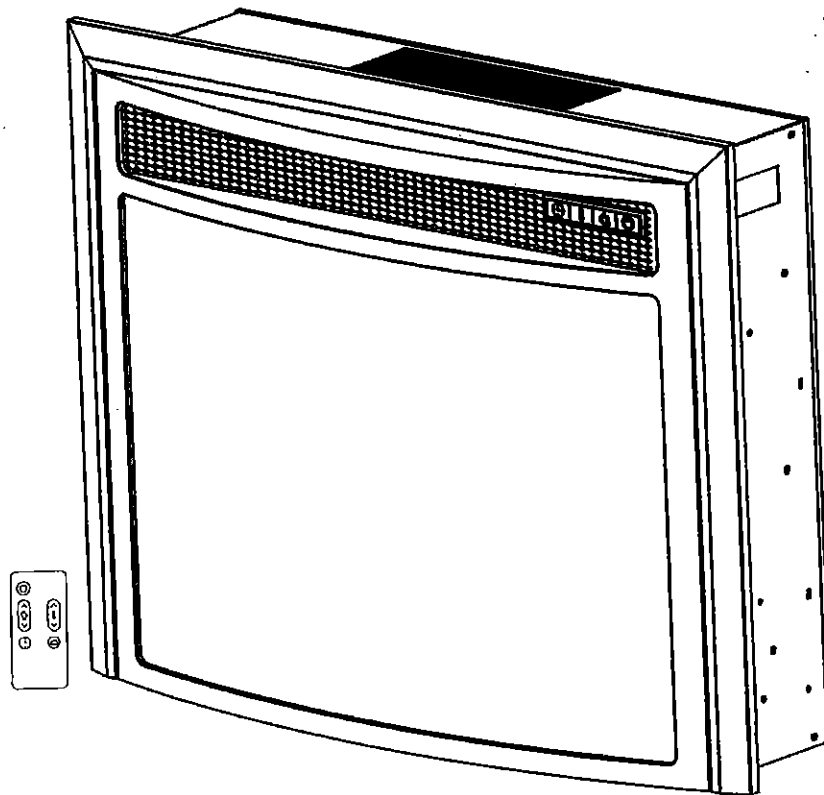


Installation and Operating Instructions



Model: EF15-25C

Thank you for purchasing a everlight Electric Fireplace insert.

Important: Read all instructions and warnings carefully before starting installation. Failure to follow these instructions may result in a possible electric shock, fire hazard and will void the warranty.

IMPORTANT INSTRUCTIONS

When using electrical appliances, the following basic precautions should always be followed to reduce the risk of fire, electrical shock, and injury to persons:

1. Read all instructions before using this heater.
2. Although this unit is a zero clearance design, to prevent possible fire do not block air intake or exhaust in any manner. Do not use on soft surfaces, such as a bed, where openings may become blocked.
3. Extreme caution is necessary when any heater is used by or near children or invalids and whenever the heater is left operating and unattended.
4. Always unplug heater when not in use.
5. Do not operate any heater with a damaged cord or plug or after the heater malfunctions or has been dropped or damaged in any manner. Return heater to authorized service facility for examination, electrical or mechanical adjustment, or repair.
6. Do not use outdoors.
7. This heater is not intended for use in bathrooms, laundry areas or similar indoor locations. Never locate heater where it may fall into a bathtub or other water container.
8. Do not run power cord under carpeting. Do not cover power cord with throw rugs, runners, or the like. Arrange power cord away from traffic areas and where it will not be tripped over.
9. To disconnect heater, turn controls to off, then remove plug from outlet.
10. Connect to properly grounded outlets only.
11. Do not insert or allow foreign objects to enter any ventilation or exhaust openings as this may cause an electrical shock, fire or damage the heater
12. A heater has hot and arching or sparking parts inside. Do not use in areas where gasoline, paint, or other flammable liquids are used or stored.
13. Use this heater only as described in this manual. Any other use not recommended by the manufacturer may cause fire, electrical shock or injury to persons.
14. Avoid the use of an extension cord because the extension cord may overheat and cause a risk of fire. However, if you have to use an extension cord, the cord shall be No.14ga minimum size and rated not less than 1875 watts.

"SAVE THESE INSTRUCTIONS"

USER INSTRUCTIONS

1. Any repairs to this appliance should be carried out by qualified / authorized service personnel only.
2. Under no circumstances should this appliance be modified. Parts having to be removed for servicing must be replaced with original "OEM" (original equipment manufacturers) parts only.
3. The firebox is to be cleaned with a damp cloth (water) only.

IMPORTANT: Always unplug the power cord before cleaning the unit. Do not use any abrasive cleaners on the unit.

4. Please unplug this fireplace when not in use.

General

Unpack the heater carefully and retain the packaging for possible future use, such as moving or returning the fireplace to your supplier.

The fireplace incorporates a flame effect, which can be used with or without heater so that the comforting effect may be enjoyed at any time of the year. Using the flame effect on its own only requires a small amount of electricity. Before connecting the heater, check that the supply voltage is the same as that stated on the heater.

Electrical connection

WARNING THIS APPLIANCE MUST BE EARTHED

This heater must be used on A/C supply only and the voltage marked on the heater must correspond to the supply voltage.

Before switching on, please read the safety warnings and operating instructions.

WARNING: Electrical outlet wiring must comply with local building codes and other applicable regulations to reduce the risk of fire, electrical shock and injury to persons.

WARNING: Do not use this fireplace insert if any part of it has been under water. Immediately call a qualified service technician to inspect the fireplace and replace any part of the electrical system which has been under water.

Locating Your Fireplace

When choosing a location for your new fireplace, ensure that the general instructions are followed.

Also, for best effect, install the fireplace out of direct sunlight.

It is safe to set the fireplace insert close to non-combustibles .DO NOT STORE OR USE GASOLINE OR OTHER FLAMMABLE VAPORS OR LIQUIDS IN THE VICINITY OF THIS OR ANY OTHER APPLIANCE.

Mantel installation

Please refer to the detailed instructions that come with the mantel that you purchased.

Specifications

EF15-25C

Fireplace Insert dimensions (w x d x h)	708x215x553(mm) 27.9"x8.5"x21.8"
Net Weight	
Gross Weight	
Voltage	120V
Frequency	60 Hz
Watts / Amps	1400W / 11.6 A
Heater Rating	1300W

Service Instructions

For your safety, service must be performed by qualified / authorized service personnel only.

Glass Information

1. Under no circumstances should this product be operated with a broken or chipped glass panel.
2. Do not strike or slam the glass.
3. Do not use abrasive cleansers to clean the glass.
4. This product uses tempered glass. Replacement of the glass supplied by the manufacture should only be performed by authorized service personnel.

Operating Instructions

After reading these instructions, confirm that all controls on the heater are in the off position. Plug the heater into a 10 amp 110 volt outlet.

All controls and switches are on the front panel of the heater located inside the right hand door.

Remote Control



Memory switch only works when the main power is on.

This function will store the current setting when the unit is turned off and will recover setting when pressed again.

When the memory is switched OFF, it will cancel the Timing Shut Down setting and the brightness level will recover to 5.



Press ^ adjusts the brightness level higher.

Press V adjusts the brightness level lower.

Full bright--High bright--Medium--Low bright--Tiny bright



Press ^ adjusts the temperature level higher.

Press V adjusts the temperature level lower.

60°C (99°F) → 30°C (86°F) → 28°C (82°F) → 26°C (78°F) → 24°C (75°F)
→ 22°C (71°F) → OFF. (Cycle)

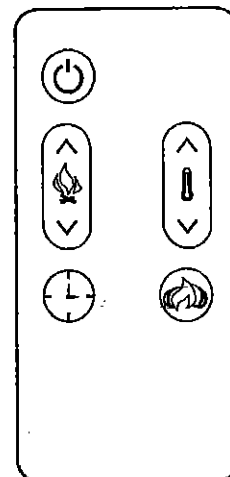


Set the off time, time range:

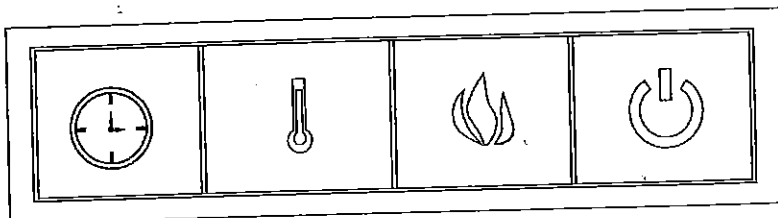
No setting → 10 → 20 → 30 → 40 → 50 → 1H → 2H → 3H → 4H → 5H → 6H → 7H → 8H → 9H (cycle)



Control button for dynamic effect in automatic mode, enter/exit effect function.



Control Panel Buttons:



When Main power is ON, the POWER indicator light and flame indicator light are on and brightness level shows 5?



Control button to open the flame function and adjust the brightness.

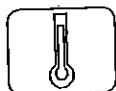
A. Flame comes from LED light board, and 5 brightness levels adjust:

Full bright--High bright--Medium--Low bright--Tiny bright

B. Motor output terminal control the 5W reflector motor, control ON/OFF, and cooperate with flame.

C. Log light: comes from LED light, together with flame, and 5 brightness level adjust:

Full bright--High bright--Medium--Low bright--Tiny bright



Controls heating functions and temperature adjustment setting. Seven temperature level settings for the heater (°C or °F).

60°C (99°F) → 30°C (86°F) → 28°C (82°F) → 26°C (78°F) → 24°C (75°F)

→ 22°C (71°F) → OFF.

Hold down Heater button 10 sec, will have conversion between °C and °F.



Set the off time, time range:

No setting → 10 → 20 → 30 → 40 → 50 → 1H → 2H → 3H → 4H → 5H → 6H → 7H → 8H → 9H (cycle)

Light Emitting Diode

This fireplace is fitted with LED (Light Emitting Diode) bulbs in place of conventional bulbs. These generate the same light levels as conventional bulbs, but use a fraction of the energy consumed. These LED bulbs are maintenance free and will not require replacing during the life of the product.

Cleaning WARNING ALWAYS DISCONNECT FROM THE POWER SUPPLY BEFORE CLEANING THE HEATER.



Fig .1

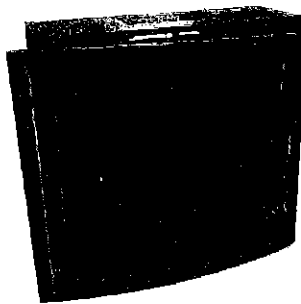


Fig.2

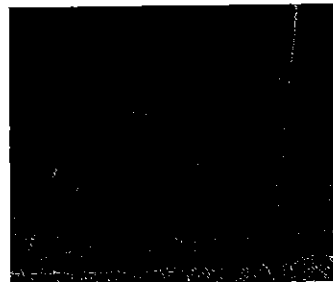


Fig.3

For general cleaning, use a soft clean duster ?never use abrasive cleaners. The glass viewing screen should be cleaned carefully with a soft cloth. DO NOT use proprietary glass cleaners.

To remove any accumulation of dust or fluff, the soft brush attachment of a vacuum cleaner should occasionally be used to clean the outlet grille of the fan heater.

To clean the fuel effect: Remove the 6 screws, see Fig.1; remove the front glass panel, see Fig.2; unscrew the rosebud log screw, see Fig.3. Wipe log set clean with a damp cloth.

Recycling

For electrical products sold within the European Community.



At the end of the electrical products useful life, it should not be disposed of with household waste. Please recycle where facilities exist. Check with your Local Authority or retailer for recycling advice in your country.

After Sales Service

Your product is guaranteed for one year from the date of purchase. Within this period, we undertake to repair or exchange this product free of charge (excluding lamps & subject to availability) provided it has been installed and operated in accordance with these instructions.

Your rights under this guarantee are additional to your statutory rights, which in turn are not affected by this guarantee. Should you require after sales service, you should contact our customer service help desk at 574-522-0871. It would assist us if you can quote the model number, series, date of purchase and nature of the fault at the time of your call. The customer service help desk will also be able to advise you should you need to purchase any spare parts.

Please do not return a faulty product to us without calling first as this may result in loss or damage and delay in providing you with a satisfactory service.

Please retain your receipt as proof of purchase.

DO NOT RETURN THIS PRODUCT TO THE STORE:

Please contact our Customer Service:

Hours: Monday thru Friday 8:00am to 4:00(EST)

Email: warranty@guslighting.com

Limited Warranty:

We warrant to the purchaser that the fireplace insert is free from defects in material and workmanship, under normal use and service, for one (1) year (1 year limited parts) from the date of purchase.

The provisions of this limited warranty shall not apply to the following:

1. Accidents.
2. Unauthorized repairs or alterations.
3. Normal maintenance.
4. Changes made to other units manufactured after this stove was manufactured.
5. Incidental damages caused by failure of the stove such as inconvenience or loss of use
6. Improper installation.

The provisions of this limited warranty shall not apply to deterioration due to wear exposure beyond the following limitations:

For 1 year from the date purchase on electrical component and circuit boards (light bulbs excluded)

Due to the properties of natural wood, gustafson lighting makes no warranty against mineraling of wood components.

Limited Warranty is void unless the following conditions are adhered to:

1. All warranty repairs must be preauthorized by repair facility.
2. We reserve the right to inspect defective parts that have been replaced under warranty. Distributor is expected to hold defective parts for 60 days.
3. Only parts and accessories and other material, available through Customer Service are to be used in the performance of warranty service.
4. Purchasers are responsible for presenting / notifying their Distributor as soon as a problem exists. The warranty repairs should be completed in a reasonable amount of time from the date of authorization, not to exceed 30 days past notification.

The warranty is null and void if used in commercial or industrial applications.